

For Research Use Only

# Mouse CD222/Igf2r Recombinant monoclonal antibody, PBS Only (Capture)

Catalog Number: 87733-2-PBS



## Basic Information

<b>Catalog Number:</b> 87733-2-PBS	<b>GenBank Accession Number:</b> NM_010515.2	<b>Purification Method:</b> Protein A purification
<b>Size:</b> 100ug , Concentration: 1 mg/ml by Nanodrop;	<b>GeneID (NCBI):</b> 16004	<b>CloneNo.:</b> 253081C6
<b>Source:</b> Rabbit	<b>UNIPROT ID:</b> Q07113	
<b>Isotype:</b> IgG	<b>Full Name:</b> insulin-like growth factor 2 receptor	
<b>Immunogen Catalog Number:</b> EG6300	<b>Calculated MW:</b> 274 kDa	

## Applications

**Tested Applications:**  
Cytometric bead array, Sandwich ELISA, Indirect ELISA

**Species Specificity:**  
mouse

## Product Information

87733-2-PBS targets CD222/Igf2r as part of a matched antibody pair:

MP03179-1: 87733-2-PBS capture and 87733-1-PBS detection (validated in Cytometric bead array)

MP03179-2: 87733-2-PBS capture and 87733-3-PBS detection (validated in Sandwich ELISA)

Unconjugated rabbit recombinant monoclonal antibody in PBS only (BSA and azide free) storage buffer at a concentration of 1 mg/mL, ready for conjugation. Created using Proteintech's proprietary in-house recombinant technology. Recombinant production enables unrivalled batch-to-batch consistency, easy scale-up, and future security of supply.

This conjugation ready format makes antibodies ideal for use in many applications including: ELISAs, multiplex assays requiring matched pairs, mass cytometry, and multiplex imaging applications. Antibody use should be optimized by the end user for each application and assay.

## Storage

**Storage:**  
Store at -80°C.  
**Storage Buffer:**  
PBS only, pH7.3

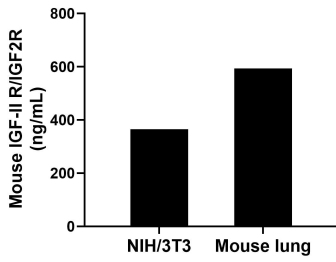
For technical support and original validation data for this product please contact:

T: 1 (888) 4PTGLAB (1-888-478-4522) (toll free in USA), or 1(312) 455-8498 (outside USA)

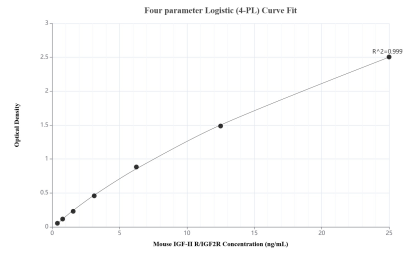
E: [proteintech@ptglab.com](mailto:proteintech@ptglab.com)  
W: [ptglab.com](http://ptglab.com)

**This product is exclusively available under Proteintech Group brand and is not available to purchase from any other manufacturer.**

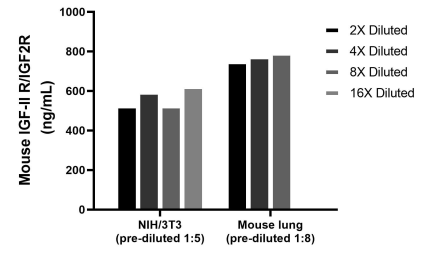
## Selected Validation Data



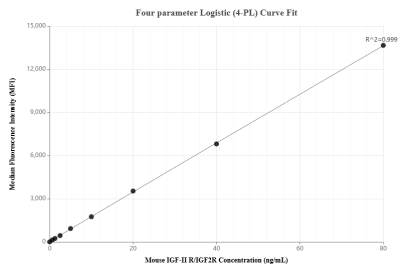
The mean IGF-II R/IGF2R concentration was determined to be 364.70 ng/mL in NIH/3T3 cell extract based on a 1.20 mg/mL extract load and 593.09 ng/mL in mouse lung extract based on a 5.00 mg/mL extract load.



Sandwich ELISA standard curve of MP03179-2, Mouse IGF-II R/IGF2R Recombinant Matched Antibody Pair - PBS only. 87733-2-PBS was coated to a plate as the capture antibody and incubated with serial dilutions of standard Eg6300. 87733-3-PBS was HRP conjugated as the detection antibody. Range: 0.391-25 ng/mL.



The mean IGF-II R/IGF2R concentration was determined to be 565.1 ng/mL in NIH/3T3 cell extract based on a 1.5 mg/mL extract load, 769.7 ng/mL in mouse lung tissue extract based on a 5.0 mg/mL extract load.



Cytometric bead array standard curve of MP03179-1, MOUSE IGF-II R/IGF2R Recombinant Matched Antibody Pair, PBS Only. Capture antibody: 87733-2-PBS. Detection antibody: 87733-1-PBS. Standard: Eg6300. Range: 0.625-80 ng/mL.