

For Research Use Only

MLKL Recombinant monoclonal antibody, PBS Only (Capture)

Catalog Number: 87741-1-PBS



Basic Information

Catalog Number: 87741-1-PBS	GenBank Accession Number: BC028141	Purification Method: Protein A purification
Size: 100ug , Concentration: 1 mg/ml by Nanodrop;	GeneID (NCBI): 197259	CloneNo.: 253011B11
Source: Rabbit	UNIPROT ID: Q8NB16	
Isotype: IgG	Full Name: mixed lineage kinase domain-like	
Immunogen Catalog Number: AG15188	Calculated MW: 471 aa, 54 kDa	
	Observed MW: 55 kDa	

Applications

Tested Applications:
WB, Sandwich ELISA, Indirect ELISA

Species Specificity:
human

Product Information

87741-1-PBS targets MLKL as part of a matched antibody pair:

MP03218-1: 87741-1-PBS capture and 87741-2-PBS detection (validated in Sandwich ELISA)

Unconjugated rabbit recombinant monoclonal antibody in PBS only (BSA and azide free) storage buffer at a concentration of 1 mg/mL, ready for conjugation. Created using Proteintech's proprietary in-house recombinant technology. Recombinant production enables unrivalled batch-to-batch consistency, easy scale-up, and future security of supply.

This conjugation ready format makes antibodies ideal for use in many applications including: ELISAs, multiplex assays requiring matched pairs, mass cytometry, and multiplex imaging applications. Antibody use should be optimized by the end user for each application and assay.

Background Information

MLKL is a pseudokinase effector of necroptosis that becomes activated through RIPK3-mediated phosphorylation, leading to oligomerization and plasma membrane disruption. By executing necroptotic cell death and promoting release of inflammatory mediators, MLKL plays a central role in innate immunity, inflammatory pathology, and host defense. Dysregulation of MLKL-dependent necroptosis has been linked to inflammatory disorders, infection, and cancer-related immune responses.

Storage

Storage:
Store at -80°C.

Storage Buffer:
PBS only, pH7.3

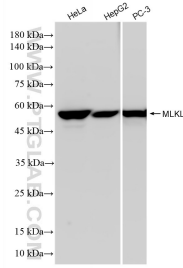
For technical support and original validation data for this product please contact:

T: 1 (888) 4PTGLAB (1-888-478-4522) (toll free in USA), or 1(312) 455-8498 (outside USA)

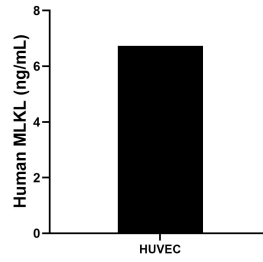
E: proteintech@ptglab.com
W: ptglab.com

This product is exclusively available under Proteintech Group brand and is not available to purchase from any other manufacturer.

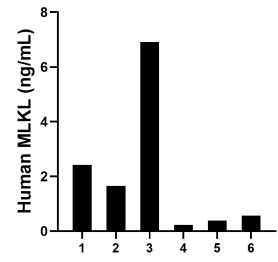
Selected Validation Data



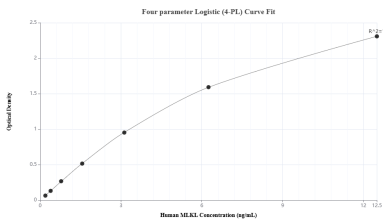
Various lysates were subjected to SDS PAGE followed by western blot with 87741-1-RR (MLKL antibody) at dilution of 1:5000 incubated at room temperature for 1.5 hours. This data was developed using the same antibody clone with 87741-1-PBS in a different storage buffer formulation.



The mean MLKL concentration was determined to be 6.73 ng/mL in HUVEC cell extract based on a 1.2 mg/mL extract load.



Plasma of six individual healthy human donors was measured. The human MLKL concentration of detected samples was determined to be 2.02 ng/mL with a range of 0.22 - 6.91 ng/mL.



Sandwich ELISA standard curve of MP03218-1, Human MLKL Recombinant Matched Antibody Pair - PBS only. 87741-1-PBS was coated to a plate as the capture antibody and incubated with serial dilutions of standard Ag15188. 87741-2-PBS was HRP conjugated as the detection antibody. Range: 0.195-12.5 ng/mL