

For Research Use Only

# MLKL Recombinant monoclonal antibody

Catalog Number: 87741-1-RR



## Basic Information

<b>Catalog Number:</b> 87741-1-RR	<b>GenBank Accession Number:</b> BC028141	<b>Purification Method:</b> Protein A purification
<b>Size:</b> 100ul , Concentration: 1000 µg/ml by Nanodrop;	<b>GeneID (NCBI):</b> 197259	<b>CloneNo.:</b> 253011B11
<b>Source:</b> Rabbit	<b>UNIPROT ID:</b> Q8NB16	<b>Recommended Dilutions:</b> WB: 1:2000-1:10000
<b>Isotype:</b> IgG	<b>Full Name:</b> mixed lineage kinase domain-like	
<b>Immunogen Catalog Number:</b> AG15188	<b>Calculated MW:</b> 471 aa, 54 kDa	
	<b>Observed MW:</b> 55 kDa	

## Applications

<b>Tested Applications:</b> WB, ELISA	<b>Positive Controls:</b> WB : HeLa cells, HepG2 cells, PC-3 cells
<b>Species Specificity:</b> human	

## Background Information

MLKL is a pseudokinase effector of necroptosis that becomes activated through RIPK3-mediated phosphorylation, leading to oligomerization and plasma membrane disruption. By executing necroptotic cell death and promoting release of inflammatory mediators, MLKL plays a central role in innate immunity, inflammatory pathology, and host defense. Dysregulation of MLKL-dependent necroptosis has been linked to inflammatory disorders, infection, and cancer-related immune responses.

## Storage

**Storage:**  
Store at -20°C. Stable for one year after shipment.  
**Storage Buffer:**  
PBS with 0.02% sodium azide and 50% glycerol, pH7.3  
Aliquoting is unnecessary for -20°C storage

\*\*\* 20ul sizes contain 0.1% BSA

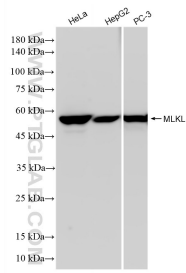
For technical support and original validation data for this product please contact:

T: 1 (888) 4PTGLAB (1-888-478-4522) (toll free in USA), or 1(312) 455-8498 (outside USA)

E: [proteintech@ptglab.com](mailto:proteintech@ptglab.com)  
W: [ptglab.com](http://ptglab.com)

This product is exclusively available under Proteintech Group brand and is not available to purchase from any other manufacturer.

## Selected Validation Data



Various lysates were subjected to SDS PAGE followed by western blot with 87741-1-RR (MLKL antibody) at dilution of 1:5000 incubated at room temperature for 1.5 hours.