

For Research Use Only

CD232/PLXNC1 Recombinant monoclonal antibody

Catalog Number:87759-2-RR



Basic Information

Catalog Number: 87759-2-RR	GenBank Accession Number: NM_018797.3	Purification Method: Protein A purification
Size: 100ul , Concentration: 1000 µg/ml by Nanodrop;	GeneID (NCBI): 54712	CloneNo.: 252223D4
Source: Rabbit	UNIPROT ID: Q9QZC2	Recommended Dilutions: WB: 1:2000-1:10000 IHC: 1:500-1:2000
Isotype: IgG	Full Name: plexin C1	
Immunogen Catalog Number: EG6304	Calculated MW: 176 kDa	
	Observed MW: 220 kDa	

Applications

Tested Applications:
WB, IHC, ELISA

Species Specificity:
mouse

Note-IHC: suggested antigen retrieval with TE buffer pH 9.0; (*) Alternatively, antigen retrieval may be performed with citrate buffer pH 6.0

Positive Controls:

WB : Transfected with Mouse CD232/PLXNC1 HEK-293T cells, mouse brain tissue, HEK-293T cells

IHC : mouse spleen tissue,

Background Information

PlxnC1 in mouse encodes a semaphorin receptor that integrates extracellular guidance and immune cues through R-Ras/Rap1-GTPase regulation. Expressed in neurons, epithelial cells, and immune cells, it governs axon targeting, olfactory circuit formation, and inflammatory responses. Loss of PlxnC1 disrupts olfactory axon sorting and modifies immune signaling, underscoring its conserved role in neurodevelopmental patterning and immune homeostasis.

Storage

Storage:

Store at -20°C. Stable for one year after shipment.

Storage Buffer:

PBS with 0.02% sodium azide and 50% glycerol, pH7.3

Aliquoting is unnecessary for -20°C storage

***** 20ul sizes contain 0.1% BSA**

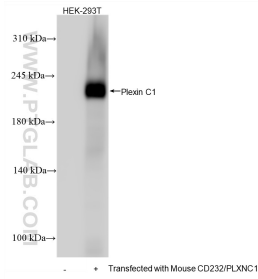
For technical support and original validation data for this product please contact:

T: 1 (888) 4PTGLAB (1-888-478-4522) (toll free in USA), or 1(312) 455-8498 (outside USA)

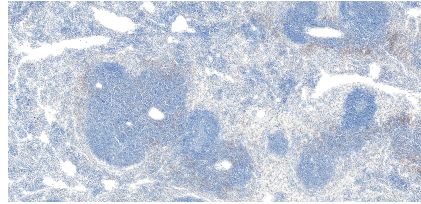
E: proteintech@ptglab.com
W: ptglab.com

This product is exclusively available under Proteintech Group brand and is not available to purchase from any other manufacturer.

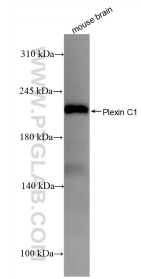
Selected Validation Data



Various lysates were subjected to SDS PAGE followed by western blot with 87759-2-RR (CD232/PLXNC1 antibody) at dilution of 1:5000 incubated at room temperature for 1.5 hours.



Immunohistochemical analysis of paraffin-embedded mouse spleen tissue slide using 87759-2-RR (CD232/PLXNC1 antibody) at dilution of 1:1000 (under 10x lens). Heat mediated antigen retrieval with Tris-EDTA buffer (pH 9.0).



Various lysates were subjected to SDS PAGE followed by western blot with 87759-2-RR (CD232/PLXNC1 antibody) at dilution of 1:5000 incubated at room temperature for 1.5 hours.