

For Research Use Only

IFNAR2 Recombinant monoclonal antibody

Catalog Number: 87764-2-RR



Basic Information

Catalog Number: 87764-2-RR	GenBank Accession Number: NM_010509	Purification Method: Protein A purification
Size: 100ul , Concentration: 1000 µg/ml by Nanodrop;	GeneID (NCBI): 15976	CloneNo.: 252155C12
Source: Rabbit	UNIPROT ID: O35664-1	Recommended Dilutions: WB: 1:2000-1:10000 IF/ICC: 1:150-1:600
Isotype: IgG	Full Name: interferon (alpha and beta) receptor 2	
Immunogen Catalog Number: EG6269	Calculated MW: 57 kDa	
	Observed MW: 55, 110 kDa	

Applications

Tested Applications: WB, IF/ICC, ELISA	Positive Controls: WB : C2C12 cells, IF/ICC : RAW 264.7 cells,
Species Specificity: mouse	

Background Information

Interferon alpha/beta receptor 2 (IFNAR2) is a type I membrane protein that associates with IFNAR1 to form the receptor for type I interferons. Binding and activation of the receptor stimulate Janus protein kinases, which in turn phosphorylate several proteins, including STAT1 and STAT2, and then increase transcription of the IFN-induced genes whose products exert antiviral, immunomodulatory, and antiproliferative effects.

Storage

Storage:
Store at -20°C. Stable for one year after shipment.
Storage Buffer:
PBS with 0.02% sodium azide and 50% glycerol, pH7.3
Aliquoting is unnecessary for -20°C storage

*** 20ul sizes contain 0.1% BSA

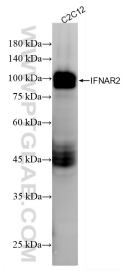
For technical support and original validation data for this product please contact:

T: 1 (888) 4PTGLAB (1-888-478-4522) (toll free in USA), or 1(312) 455-8498 (outside USA)

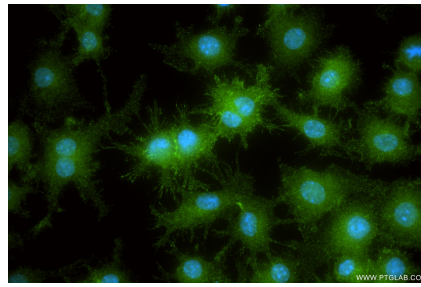
E: proteintech@ptglab.com
W: ptglab.com

This product is exclusively available under Proteintech Group brand and is not available to purchase from any other manufacturer.

Selected Validation Data



C2C12 cells were subjected to SDS PAGE followed by western blot with 87764-2-RR (Interferon alpha/beta receptor 2 antibody) at dilution of 1:5000 incubated at room temperature for 1.5 hours.



Immunofluorescent analysis of (4% PFA) fixed RAW 264.7 cells using Interferon alpha/beta receptor 2 antibody (87764-2-RR, Clone: 252155C12) at dilution of 1:300 and CoraLite®488-Conjugated Goat Anti-Rabbit IgG(H+L) (SA00013-2).