

For Research Use Only

CEP250/CNAP1 Recombinant monoclonal antibody

Catalog Number:87777-1-RR



Basic Information

Catalog Number: 87777-1-RR	GenBank Accession Number: BC001433	Purification Method: Protein A purification
Size: 100ul , Concentration: 1000 µg/ml by Nanodrop;	GeneID (NCBI): 11190	CloneNo.: 253334H2
Source: Rabbit	UNIPROT ID: Q9BV73	Recommended Dilutions: WB: 1:5000-1:50000
Isotype: IgG	Full Name: centrosomal protein 250kDa	
Immunogen Catalog Number: AG0394	Calculated MW: 281 kDa	
	Observed MW: 250-280 kDa	

Applications

Tested Applications: WB, ELISA	Positive Controls: WB : HEK-293T cells, LNCaP cells, HEL cells, HeLa cells, A431 cells
Species Specificity: human	

Background Information

CEP250, also known as C-Nap1, is a 250 kDa coiled-coil protein that localizes to the proximal ends of mother and daughter centrioles. It is required for centriole-centriole cohesion during interphase of the cell cycle. It dissociates from the centrosomes when parental centrioles separate at the beginning of mitosis. The protein associates with and is phosphorylated by NIMA-related kinase 2, which is also associated with the centrosome.

Storage

Storage:
Store at -20°C. Stable for one year after shipment.
Storage Buffer:
PBS with 0.02% sodium azide and 50% glycerol, pH7.3
Aliquoting is unnecessary for -20°C storage

*** 20ul sizes contain 0.1% BSA

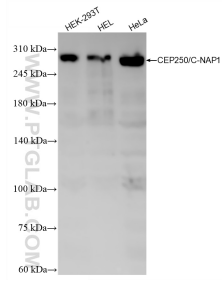
For technical support and original validation data for this product please contact:

T: 1 (888) 4PTGLAB (1-888-478-4522) (toll free in USA), or 1(312) 455-8498 (outside USA)

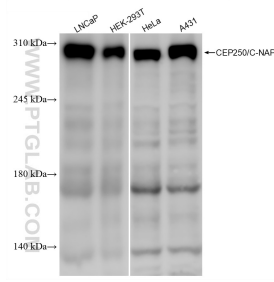
E: proteintech@ptglab.com
W: ptglab.com

This product is exclusively available under Proteintech Group brand and is not available to purchase from any other manufacturer.

Selected Validation Data



Various lysates were subjected to SDS PAGE followed by western blot with 87777-1-RR (CEP250/CNAP1 antibody) at dilution of 1:10000 incubated at room temperature for 1.5 hours.



Various lysates were subjected to SDS PAGE followed by western blot with 87777-1-RR (CEP250/CNAP1 antibody) at dilution of 1:5000 incubated at room temperature for 1.5 hours.