

For Research Use Only

# Mouse ORM1 Recombinant monoclonal antibody, PBS Only (Detector)

Catalog Number: 87784-4-PBS



## Basic Information

<b>Catalog Number:</b> 87784-4-PBS	<b>GenBank Accession Number:</b> NM_008768.2	<b>Purification Method:</b> Protein A purification
<b>Size:</b> 100ug , Concentration: 1 mg/ml by Nanodrop;	<b>GeneID (NCBI):</b> 18405	<b>CloneNo.:</b> 253420B5
<b>Source:</b> Rabbit	<b>UNIPROT ID:</b> Q60590	
<b>Isotype:</b> IgG	<b>Full Name:</b> orosomucoid 1	
<b>Immunogen Catalog Number:</b> EG2752	<b>Calculated MW:</b> 24 kDa	

## Applications

**Tested Applications:**  
Sandwich ELISA, Indirect ELISA

**Species Specificity:**  
mouse

## Product Information

87784-4-PBS targets ORM1 as part of a matched antibody pair:

MP03203-2: 87784-5-PBS capture and 87784-4-PBS detection (validated in Sandwich ELISA)

Unconjugated rabbit recombinant monoclonal antibody in PBS only (BSA and azide free) storage buffer at a concentration of 1 mg/mL, ready for conjugation. Created using Proteintech's proprietary in-house recombinant technology. Recombinant production enables unrivalled batch-to-batch consistency, easy scale-up, and future security of supply.

This conjugation ready format makes antibodies ideal for use in many applications including: ELISAs, multiplex assays requiring matched pairs, mass cytometry, and multiplex imaging applications. Antibody use should be optimized by the end user for each application and assay.

## Storage

**Storage:**  
Store at -80°C.

**Storage Buffer:**  
PBS only, pH7.3

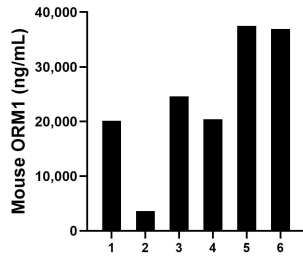
For technical support and original validation data for this product please contact:

T: 1 (888) 4PTGLAB (1-888-478-4522) (toll free in USA), or 1(312) 455-8498 (outside USA)

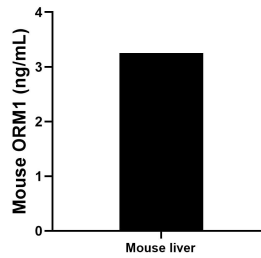
E: [proteintech@ptglab.com](mailto:proteintech@ptglab.com)  
W: [ptglab.com](http://ptglab.com)

**This product is exclusively available under Proteintech Group brand and is not available to purchase from any other manufacturer.**

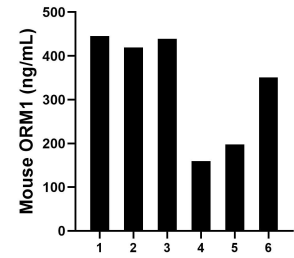
## Selected Validation Data



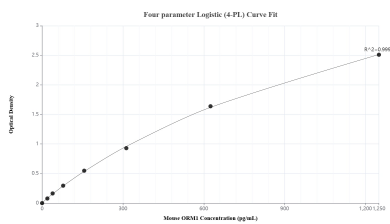
Serum of six mice was measured. The ORM1 concentration of detected samples was determined to be 23,857.2 ng/mL with a range of 3,641.4-37,462.8 ng/mL.



Mouse liver tissue from one adult mouse (chopped in 1-2 mm pieces in 30 mL of medium) were cultured in RPMI supplemented with 10% fetal bovine serum and 50  $\mu$ M  $\beta$ -mercaptoethanol. Aliquots of the cell culture supernates were removed, assayed for levels of mouse ORM1, and measured 3.2 ng/mL.



Urine of six mice was measured. The ORM1 concentration of detected samples was determined to be 335.2 ng/mL with a range of 159.7-445.4 ng/mL.



Sandwich ELISA standard curve of MP03203-2, Mouse ORM1 Recombinant Matched Antibody Pair - PBS only. 87784-5-PBS was coated to a plate as the capture antibody and incubated with serial dilutions of standard Eg2752. 87784-4-PBS was HRP conjugated as the detection antibody. Range: 19.5-1250 pg/mL.