

For Research Use Only

# SDHB Recombinant monoclonal antibody

Catalog Number: 87791-1-RR



## Basic Information

<b>Catalog Number:</b> 87791-1-RR	<b>GenBank Accession Number:</b> BC007840	<b>Purification Method:</b> Protein A purification
<b>Size:</b> 100ul , Concentration: 1000 µg/ml by Nanodrop;	<b>GeneID (NCBI):</b> 6390	<b>CloneNo.:</b> 253361D1
<b>Source:</b> Rabbit	<b>UNIPROT ID:</b> P21912	<b>Recommended Dilutions:</b> WB: 1:1000-1:6000 IHC: 1:500-1:2000
<b>Isotype:</b> IgG	<b>Full Name:</b> succinate dehydrogenase complex, subunit B, iron sulfur (Ip)	
<b>Immunogen Catalog Number:</b> AG0968	<b>Calculated MW:</b> 32 kDa	
	<b>Observed MW:</b> 28-32 kDa	

## Applications

### Tested Applications:

WB, IHC, ELISA

### Species Specificity:

human, mouse, rat

**Note-IHC: suggested antigen retrieval with TE buffer pH 9.0; (\*) Alternatively, antigen retrieval may be performed with citrate buffer pH 6.0**

### Positive Controls:

WB : HepG2 cells, HSC-T6 cells, HeLa cells, HEK-293 cells, K-562 cells, NIH/3T3 cells, Neuro-2a cells

IHC : human kidney tissue,

## Background Information

SDHB(Succinate dehydrogenase [ubiquinone] iron-sulfur subunit, mitochondrial) is also named as SDH, SDH1 and belongs to the succinate dehydrogenase/fumarate reductase iron-sulfur protein family. The SDHD, SDHB, and SDHC genes encode subunits of mitochondrial complex II (succinate dehydrogenase). Mitochondrial complex II is a heterotetrameric complex involved in the aerobic electron transport chain and catalyses the oxidation of succinate to fumarate (Krebs cycle) with transport of electrons to the ubiquinone pool. SDHA and SDHB are the hydrophilic catalytic part of the complex and are highly conserved(J Med Genet 2004;41:e99). Defects in SDHB are a cause of susceptibility to pheochromocytoma (PCC), paragangliomas type 4 (PGL4), paraganglioma and gastric stromal sarcoma (PGSS) and Cowden-like syndrome (CWDLS).

## Storage

### Storage:

Store at -20°C. Stable for one year after shipment.

### Storage Buffer:

PBS with 0.02% sodium azide and 50% glycerol, pH7.3

Aliquoting is unnecessary for -20°C storage

\*\*\* 20ul sizes contain 0.1% BSA

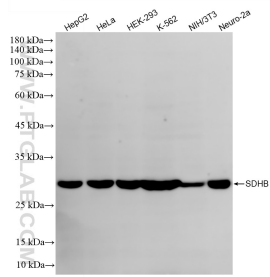
For technical support and original validation data for this product please contact:

T: 1 (888) 4PTGLAB (1-888-478-4522) (toll free in USA), or 1(312) 455-8498 (outside USA)

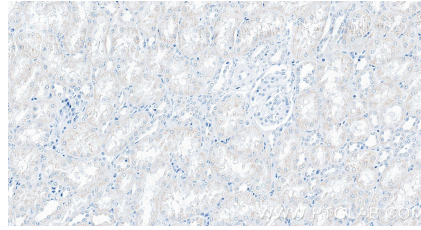
E: proteintech@ptglab.com  
W: ptglab.com

This product is exclusively available under Proteintech Group brand and is not available to purchase from any other manufacturer.

## Selected Validation Data



Various lysates were subjected to SDS PAGE followed by western blot with 87791-1-RR (SDHB antibody) at dilution of 1:3000 incubated at room temperature for 1.5 hours.



Immunohistochemical analysis of paraffin-embedded human kidney tissue slide using 87791-1-RR (SDHB antibody) at dilution of 1:1000 (under 40x lens). Heat mediated antigen retrieval with Tris-EDTA buffer (pH 9.0).