

For Research Use Only

C1QL2 Recombinant monoclonal antibody

Catalog Number:87797-1-RR



Basic Information

Catalog Number: 87797-1-RR	GenBank Accession Number: NM_182528	Purification Method: Protein A purification
Size: 100ul , Concentration: 1000 µg/ml by Nanodrop;	GeneID (NCBI): 165257	CloneNo.: 253329D5
Source: Rabbit	UNIPROT ID: Q7Z5L3	Recommended Dilutions: WB: 1:2000-1:10000 IF/ICC: 1:200-1:800
Isotype: IgG	Full Name: complement component 1, q subcomponent-like 2	
Immunogen Catalog Number: AG37614	Calculated MW: 29 kDa	
	Observed MW: 35 kDa	

Applications

Tested Applications: WB, IF/ICC, ELISA	Positive Controls:
Species Specificity: human, mouse, rat, pig	WB : HeLa cells, HEK-293 cells, mouse brain tissue, rat brain tissue, pig brain tissue
	IF/ICC : HeLa cells,

Background Information

Complement C1q-like protein 2 (C1QL2, also known as CTRP10) is a member of the C1q-like protein family. It is a secreted protein that plays a role in synaptic organization and function. C1QL2 is involved in the formation and maintenance of synapses, particularly in the central nervous system (CNS) (PMID: 20646056). It interacts with specific neurexin-3 isoforms to recruit synaptic vesicles and modulate synaptic transmission. Additionally, C1QL2 has been implicated in the regulation of hippocampal mossy fiber-CA3 synapse function, suggesting its role in synaptic plasticity and memory formation (PMID: 28219683).

Storage

Storage:
Store at -20°C. Stable for one year after shipment.
Storage Buffer:
PBS with 0.02% sodium azide and 50% glycerol, pH7.3
Aliquoting is unnecessary for -20°C storage

*** 20ul sizes contain 0.1% BSA

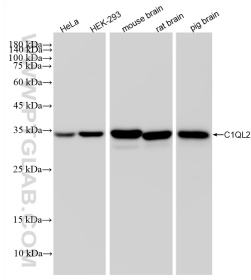
For technical support and original validation data for this product please contact:

T: 1 (888) 4PTGLAB (1-888-478-4522) (toll free in USA), or 1(312) 455-8498 (outside USA)

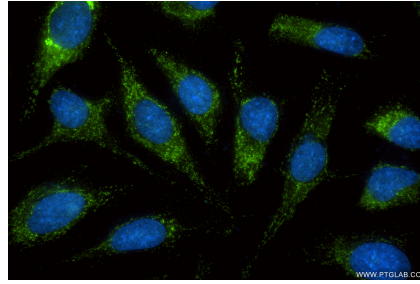
E: proteintech@ptglab.com
W: ptglab.com

This product is exclusively available under Proteintech Group brand and is not available to purchase from any other manufacturer.

Selected Validation Data



Various lysates were subjected to SDS PAGE followed by western blot with 87797-1-RR (C1QL2 antibody) at dilution of 1:5000 incubated at room temperature for 1.5 hours.



Immunofluorescent analysis of (-20°C Methanol) fixed HeLa cells using C1QL2 antibody (87797-1-RR, Clone: 253329D5) at dilution of 1:400 and CoraLite® 488-Conjugated Goat Anti-Rabbit IgG(H+L) (SA00013-2).