

For Research Use Only

Claudin 25 Recombinant monoclonal antibody, PBS Only

Catalog Number:87798-1-PBS



Basic Information

Catalog Number:

87798-1-PBS

Size:

100ug, Concentration: 1 mg/ml by Nanodrop;

Source:

Rabbit

Isotype:

IgG

GenBank Accession Number:

M_001101389

GeneID (NCBI):

644672

UNIPROT ID:

C9JDP6

Full Name:

claudin-like

Calculated MW:

229aa, 25 kDa

Observed MW:

32 kDa

Purification Method:

Protein A purification

CloneNo.:

253383C11

Applications

Tested Applications:

WB, Indirect ELISA

Species Specificity:

human, mouse

Background Information

Claudin-25, also known as Claudin containing domain 1, is a tight junction protein. It plays a role in epithelial cell barrier function and ion transport regulation. Predominantly expressed in the blood-brain barrier (BBB) and myelin sheaths, it regulates paracellular permeability. It plays vital roles in maintaining neural homeostasis, and its dysregulation is linked to demyelinating diseases and certain cancers.

Storage

Storage:

Store at -80°C.

Storage Buffer:

PBS only, pH7.3

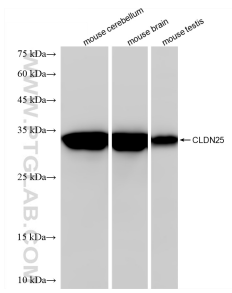
For technical support and original validation data for this product please contact:

T: 1 (888) 4PTGLAB (1-888-478-4522) (toll free in USA), or 1(312) 455-8498 (outside USA)

E: proteintech@ptglab.com
W: ptglab.com

This product is exclusively available under Proteintech Group brand and is not available to purchase from any other manufacturer.

Selected Validation Data



Various lysates were subjected to SDS PAGE followed by western blot with 87798-1-RR (CLDN25 antibody) at dilution of 1:5000 incubated at room temperature for 1.5 hours. This data was developed using the same antibody clone with 87798-1-PBS in a different storage buffer formulation.