

For Research Use Only

CHMP4C Recombinant monoclonal antibody, PBS Only

Catalog Number: 87800-1-PBS



Basic Information

| | | |
|---|---|---|
| Catalog Number: 87800-1-PBS | GenBank Accession Number: BC014321 | Purification Method: Protein A purification |
| Size: 100ug , Concentration: 1 mg/ml by Nanodrop; | GeneID (NCBI): 92421 | CloneNo.: 251884A6 |
| Source: Rabbit | UNIPROT ID: Q96CF2 | |
| Isotype: IgG | Full Name: chromatin modifying protein 4C | |
| Immunogen Catalog Number: AG9577 | Calculated MW: 233 aa, 26 kDa | |
| | Observed MW: 35 -42 kDa | |

Applications

Tested Applications:
WB, IHC, Indirect ELISA

Species Specificity:
human

Background Information

CHMP4C (Charged multivesicular body protein 4c), also known as SHAX3. It is expected to be located in the cytoplasm and membrane, which is expressed in heart, spleen and kidney. CHMP4C is one of the charged multivesicular protein (CHMP), and is involved in the composition of the endosomal sorting complex required for transport III (ESCRT-III), facilitating the necessary separation of daughter cells. CHMP4C has been proposed to be involved in the progression of different carcinomas. The molecular weight of CHMP4C is 26 kDa. Phosphorylated at Ser-210 by AURKB during cytokinesis: together with ZFYVE19/ANCHR, phosphorylated CHMP4C retains abscission-competent VPS4 (VPS4A and/or VPS4B) at the midbody ring until abscission checkpoint signaling is terminated at late cytokinesis. Phosphorylation and ubiquitination modification may lead to molecular weight of 35-42kd.

Storage

Storage:
Store at -80°C.

Storage Buffer:
PBS only, pH7.3

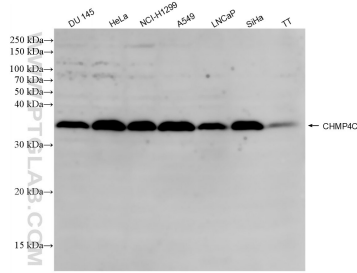
For technical support and original validation data for this product please contact:

T: 1 (888) 4PTGLAB (1-888-478-4522) (toll free in USA), or 1(312) 455-8498 (outside USA)

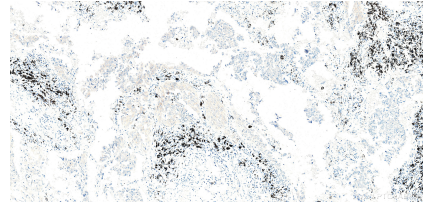
E: proteintech@ptglab.com
W: ptglab.com

This product is exclusively available under Proteintech Group brand and is not available to purchase from any other manufacturer.

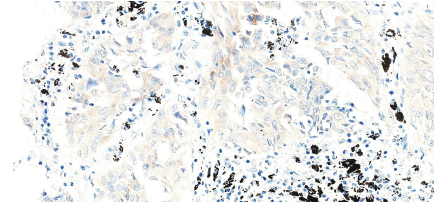
Selected Validation Data



Various lysates were subjected to SDS PAGE followed by western blot with 87800-1-RR (CHMP4C antibody) at dilution of 1:1000 incubated at room temperature for 1.5 hours. This data was developed using the same antibody clone with 87800-1-PBS in a different storage buffer formulation.



Immunohistochemical analysis of paraffin-embedded Human lung cancer (Adenocarcinoma) slide using 87800-1-RR (CHMP4C antibody) at dilution of 1:1000 (under 10x lens). Heat mediated antigen retrieval with Tris-EDTA buffer (pH 9.0). This data was developed using the same antibody clone with 87800-1-PBS in a different storage buffer formulation.



Immunohistochemical analysis of paraffin-embedded Human lung cancer (Adenocarcinoma) slide using 87800-1-RR (CHMP4C antibody) at dilution of 1:1000 (under 40x lens). Heat mediated antigen retrieval with Tris-EDTA buffer (pH 9.0). This data was developed using the same antibody clone with 87800-1-PBS in a different storage buffer formulation.