

For Research Use Only

CHMP4C Recombinant monoclonal antibody

Catalog Number: 87800-1-RR



Basic Information

Catalog Number: 87800-1-RR	GenBank Accession Number: BC014321	Purification Method: Protein A purification
Size: 100ul , Concentration: 1000 µg/ml by Nanodrop;	GeneID (NCBI): 92421	CloneNo.: 251884A6
Source: Rabbit	UNIPROT ID: Q96CF2	Recommended Dilutions: WB: 1:500-1:2000 IHC: 1:500-1:2000
Isotype: IgG	Full Name: chromatin modifying protein 4C	
Immunogen Catalog Number: AG9577	Calculated MW: 233 aa, 26 kDa	
	Observed MW: 35 -42 kDa	

Applications

Tested Applications:
WB, ELISA

Species Specificity:
human

Note-IHC: suggested antigen retrieval with TE buffer pH 9.0; (*) Alternatively, antigen retrieval may be performed with citrate buffer pH 6.0

Positive Controls:

WB : DU 145 cells, HeLa cells, NCI-H1299 cells, A549 cells, LNCap cells, SiHa cells, TT cells

IHC : Human lung cancer Adenocarcinoma ,

Background Information

CHMP4C (Charged multivesicular body protein 4c), also known as SHAX3. It is expected to be located in the cytoplasm and membrane, which is expressed in heart, spleen and kidney. CHMP4C is one of the charged multivesicular protein (CHMP), and is involved in the composition of the endosomal sorting complex required for transport III (ESCRT-III), facilitating the necessary separation of daughter cells. CHMP4C has been proposed to be involved in the progression of different carcinomas. The molecular weight of CHMP4C is 26 kDa. Phosphorylated at Ser-210 by AURKB during cytokinesis: together with ZFYVE19/ANCHR, phosphorylated CHMP4C retains abscission-competent VPS4 (VPS4A and/or VPS4B) at the midbody ring until abscission checkpoint signaling is terminated at late cytokinesis. Phosphorylation and ubiquitination modification may lead to molecular weight of 35-42kd.

Storage

Storage:

Store at -20°C. Stable for one year after shipment.

Storage Buffer:

PBS with 0.02% sodium azide and 50% glycerol, pH7.3

Aliquoting is unnecessary for -20°C storage

*** 20ul sizes contain 0.1% BSA

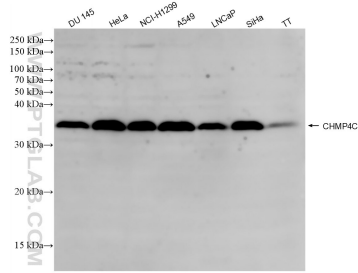
For technical support and original validation data for this product please contact:

T: 1 (888) 4PTGLAB (1-888-478-4522) (toll free in USA), or 1(312) 455-8498 (outside USA)

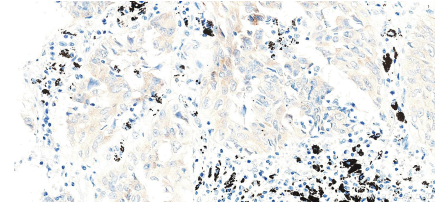
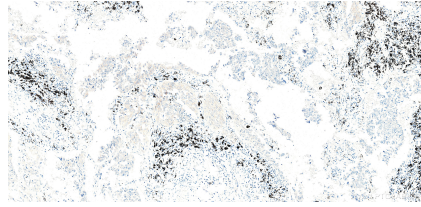
E: proteintech@ptglab.com
W: ptglab.com

This product is exclusively available under Proteintech Group brand and is not available to purchase from any other manufacturer.

Selected Validation Data



Various lysates were subjected to SDS PAGE followed by western blot with 87800-1-RR (CHMP4C antibody) at dilution of 1:1000 incubated at room temperature for 1.5 hours.



Immunohistochemical analysis of paraffin-embedded Human lung cancer (Adenocarcinoma) slide using 87800-1-RR (CHMP4C antibody) at dilution of 1:1000 (under 10x lens). Heat mediated antigen retrieval with Tris-EDTA buffer (pH 9.0).

Immunohistochemical analysis of paraffin-embedded Human lung cancer (Adenocarcinoma) slide using 87800-1-RR (CHMP4C antibody) at dilution of 1:1000 (under 40x lens). Heat mediated antigen retrieval with Tris-EDTA buffer (pH 9.0).