

For Research Use Only

# PPM1K Recombinant monoclonal antibody, PBS Only

Catalog Number: 87805-1-PBS



## Basic Information

<b>Catalog Number:</b> 87805-1-PBS	<b>GenBank Accession Number:</b> BC037552	<b>Purification Method:</b> Protein A purification
<b>Size:</b> 100ug, Concentration: 1 mg/ml by Nanodrop;	<b>GeneID (NCBI):</b> 152926	<b>CloneNo.:</b> 253328G8
<b>Source:</b> Rabbit	<b>UNIPROT ID:</b> Q8N3J5	
<b>Isotype:</b> IgG	<b>Full Name:</b> protein phosphatase 1K (PP2C domain containing)	
<b>Immunogen Catalog Number:</b> AG41706	<b>Calculated MW:</b> 41 kDa	
	<b>Observed MW:</b> 37-41 kDa	

## Applications

**Tested Applications:**  
WB, Indirect ELISA

**Species Specificity:**  
human

## Background Information

Protein phosphatase, Mg<sup>2+</sup>/Mn<sup>2+</sup> dependent 1K (PPM1K), is a member of the PPM family of Mn<sup>2+</sup>/Mg<sup>2+</sup>-dependent protein phosphatases. PPM1K, essential for cell survival and development, is targeted to the mitochondria where it plays a key role in regulation of the mitochondrial permeability transition pore. PPM1K is essential for the regulation and nutrient-induced activation of the branched-chain alpha-keto acid dehydrogenase complex (BCKD or BCKDC), which catalyzes the breakdown of branched-chain amino acids (BCAA).

## Storage

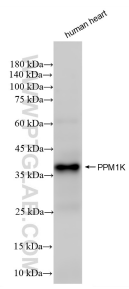
**Storage:**  
Store at -80°C.

**Storage Buffer:**  
PBS only, pH7.3

For technical support and original validation data for this product please contact:  
T: 1 (888) 4PTGLAB (1-888-478-4522) (toll free in USA), or 1(312) 455-8498 (outside USA)      E: proteintech@ptglab.com  
W: ptglab.com

This product is exclusively available under Proteintech Group brand and is not available to purchase from any other manufacturer.

## Selected Validation Data



human heart tissue were subjected to SDS PAGE followed by western blot with 87805-1-RR (PPM1K antibody) at dilution of 1:2000 incubated at room temperature for 1.5 hours. This data was developed using the same antibody clone with 87805-1-PBS in a different storage buffer formulation.