

For Research Use Only

PPM1K Recombinant monoclonal antibody

Catalog Number: 87805-1-RR



Basic Information

Catalog Number: 87805-1-RR	GenBank Accession Number: BC037552	Purification Method: Protein A purification
Size: 100ul , Concentration: 1000 µg/ml by Nanodrop;	GeneID (NCBI): 152926	CloneNo.: 253328G8
Source: Rabbit	UNIPROT ID: Q8N3J5	Recommended Dilutions: WB: 1:1000-1:4000
Isotype: IgG	Full Name: protein phosphatase 1K (PP2C domain containing)	
Immunogen Catalog Number: AG41706	Calculated MW: 41 kDa	
	Observed MW: 37-41 kDa	

Applications

Tested Applications: WB, ELISA	Positive Controls: WB : human heart tissue,
Species Specificity: human	

Background Information

Protein phosphatase, Mg²⁺/Mn²⁺ dependent 1K (PPM1K), is a member of the PPM family of Mn²⁺/Mg²⁺-dependent protein phosphatases. PPM1K, essential for cell survival and development, is targeted to the mitochondria where it plays a key role in regulation of the mitochondrial permeability transition pore. PPM1K is essential for the regulation and nutrient-induced activation of the branched-chain alpha-keto acid dehydrogenase complex (BCKD or BCKDC), which catalyzes the breakdown of branched-chain amino acids (BCAA).

Storage

Storage:
Store at -20°C. Stable for one year after shipment.
Storage Buffer:
PBS with 0.02% sodium azide and 50% glycerol, pH7.3
Aliquoting is unnecessary for -20°C storage

*** 20ul sizes contain 0.1% BSA

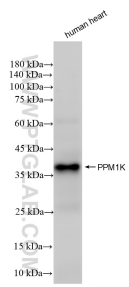
For technical support and original validation data for this product please contact:

T: 1 (888) 4PTGLAB (1-888-478-4522) (toll free in USA), or 1(312) 455-8498 (outside USA)

E: proteintech@ptglab.com
W: ptglab.com

This product is exclusively available under Proteintech Group brand and is not available to purchase from any other manufacturer.

Selected Validation Data



human heart tissue were subjected to SDS PAGE followed by western blot with 87805-1-RR (PPM1K antibody) at dilution of 1:2000 incubated at room temperature for 1.5 hours.