

For Research Use Only

# PPP1R12B Recombinant monoclonal antibody

Catalog Number: 87808-1-RR



## Basic Information

<b>Catalog Number:</b> 87808-1-RR	<b>GenBank Accession Number:</b> BC034430	<b>Purification Method:</b> Protein A purification
<b>Size:</b> 100ul , Concentration: 1000 µg/ml by Nanodrop;	<b>GeneID (NCBI):</b> 4660	<b>CloneNo.:</b> 253416D1
<b>Source:</b> Rabbit	<b>UNIPROT ID:</b> O60237	<b>Recommended Dilutions:</b> WB: 1:5000-1:50000 IF/ICC: 1:50-1:500
<b>Isotype:</b> IgG	<b>Full Name:</b> protein phosphatase 1, regulatory (inhibitor) subunit 12B	
<b>Immunogen Catalog Number:</b> AG4185	<b>Calculated MW:</b> 982 aa, 110 kDa	
	<b>Observed MW:</b> 110-130 kDa	

## Applications

**Tested Applications:**  
WB, IF/ICC, ELISA

**Species Specificity:**  
human, mouse, rat

**Positive Controls:**

**WB:** mouse heart tissue, rat heart tissue, mouse skeletal muscle tissue, rat skeletal muscle tissue, mouse brain tissue, rat brain tissue

**IF/ICC:** NIH/3T3 cells,

## Background Information

PPP1R12B (MYPT2) is a critical regulatory subunit of protein phosphatase 1, primarily functioning in muscle tissues to control myosin phosphatase activity and calcium sensitivity of contraction. Its tissue-specific expression, particularly enrichment in heart and skeletal muscle, along with multiple alternatively spliced isoforms, enables specialized roles in different cellular contexts. The protein's ankyrin repeats and C-terminal kinase-interacting domain facilitate its function as a molecular scaffold that directs PP1 catalytic activity toward specific substrates.

## Storage

**Storage:**  
Store at -20°C. Stable for one year after shipment.

**Storage Buffer:**  
PBS with 0.02% sodium azide and 50% glycerol, pH7.3

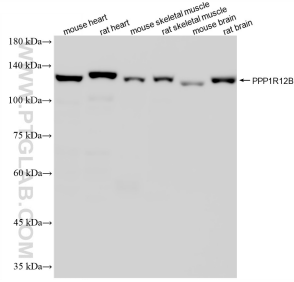
Aliquoting is unnecessary for -20°C storage

\*\*\* 20ul sizes contain 0.1% BSA

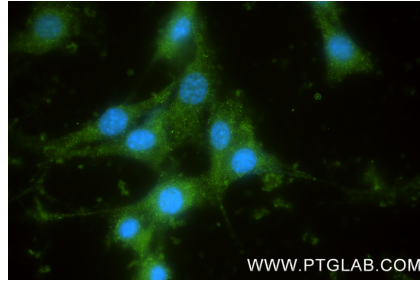
For technical support and original validation data for this product please contact:  
T: 1 (888) 4PTGLAB (1-888-478-4522) (toll free in USA), or 1(312) 455-8498 (outside USA)      E: proteintech@ptglab.com  
W: ptglab.com

This product is exclusively available under Proteintech Group brand and is not available to purchase from any other manufacturer.

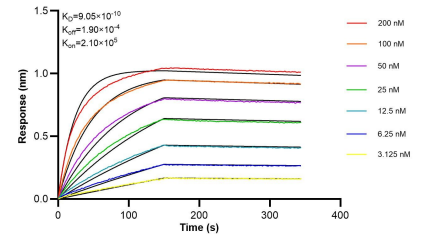
## Selected Validation Data



Various lysates were subjected to SDS PAGE followed by western blot with 87808-1-RR (PPP1R12B antibody) at dilution of 1:10000 incubated at room temperature for 1.5 hours.



Immunofluorescent analysis of (-20°C Methanol) fixed NIH/3T3 cells using PPP1R12B antibody (87808-1-RR, Clone: 253416D1) at dilution of 1:200 and CoraLite® 488-Conjugated Goat Anti-Rabbit IgG(H+L) (SA00013-2).



Bi-layer interferometry (BLI) kinetic assays of 87808-1-RR against Human PPP1R12B were performed. The affinity constant is 0.905 nM.