

For Research Use Only

# CHCHD10 Recombinant monoclonal antibody

Catalog Number: 87812-2-RR



## Basic Information

<b>Catalog Number:</b> 87812-2-RR	<b>GenBank Accession Number:</b> BC065232	<b>Purification Method:</b> Protein A purification
<b>Size:</b> 100ul , Concentration: 1000 µg/ml by Nanodrop;	<b>GeneID (NCBI):</b> 400916	<b>CloneNo.:</b> 253308E4
<b>Source:</b> Rabbit	<b>UNIPROT ID:</b> Q8WYQ3	<b>Recommended Dilutions:</b> WB: 1:2000-1:10000 IF/ICC: 1:250-1:1000
<b>Isotype:</b> IgG	<b>Full Name:</b> coiled-coil-helix-coiled-coil-helix domain containing 10	
<b>Immunogen Catalog Number:</b> AG22598	<b>Calculated MW:</b> 14 kDa	
	<b>Observed MW:</b> 14-18 kDa	

## Applications

<b>Tested Applications:</b> WB, IF/ICC, ELISA	<b>Positive Controls:</b>
<b>Species Specificity:</b> human, mouse, rat	<b>WB :</b> LNCaP cells, HepG2 cells, mouse heart tissue, A549 cells, HEK-293 cells, rat heart tissue, mouse liver tissue
	<b>IF/ICC :</b> HepG2 cells,

## Background Information

CHCHD10 is a mitochondrial protein that is enriched at cristae junctions in the intermembrane space and is likely involved in mitochondrial genome stability and maintenance of cristae junctions. Mutations in CHCHD10 have recently been described as a cause of frontotemporal dementia (FTD) comorbid with amyotrophic lateral sclerosis (ALS).

## Storage

**Storage:**  
Store at -20°C. Stable for one year after shipment.  
**Storage Buffer:**  
PBS with 0.02% sodium azide and 50% glycerol, pH7.3  
Aliquoting is unnecessary for -20°C storage

\*\*\* 20ul sizes contain 0.1% BSA

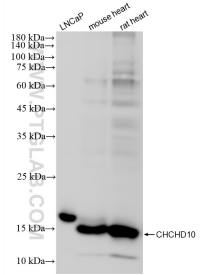
For technical support and original validation data for this product please contact:

T: 1 (888) 4PTGLAB (1-888-478-4522) (toll free in USA), or 1(312) 455-8498 (outside USA)

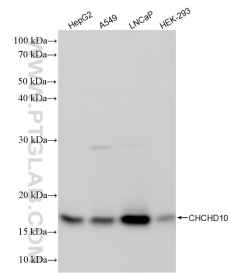
E: proteintech@ptglab.com  
W: ptglab.com

This product is exclusively available under Proteintech Group brand and is not available to purchase from any other manufacturer.

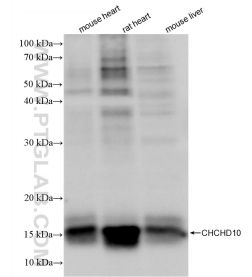
## Selected Validation Data



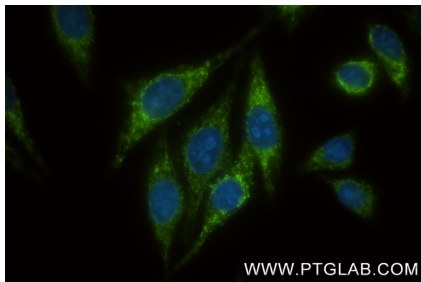
Various lysates were subjected to SDS PAGE followed by western blot with 87812-2-RR (CHCHD10 antibody) at dilution of 1:5000 incubated at room temperature for 1.5 hours.



Various lysates were subjected to SDS PAGE followed by western blot with 87812-2-RR (CHCHD10 antibody) at dilution of 1:5000 incubated at room temperature for 1.5 hours.



Various lysates were subjected to SDS PAGE followed by western blot with 87812-2-RR (CHCHD10 antibody) at dilution of 1:5000 incubated at room temperature for 1.5 hours.



Immunofluorescent analysis of (-20°C Methanol) fixed HepG2 cells using CHCHD10 antibody (87812-2-RR, Clone: 253308E4) at dilution of 1:500 and CoraLite®488-Conjugated Goat Anti-Rabbit IgG(H+L) (SA00013-2).