

For Research Use Only

CHCHD10 Recombinant monoclonal antibody, PBS Only (Detector)

Catalog Number: 87812-3-PBS



Basic Information

Catalog Number: 87812-3-PBS	GenBank Accession Number: BC065232	Purification Method: Protein A purification
Size: 100ug , Concentration: 1 mg/ml by Nanodrop;	GeneID (NCBI): 400916	CloneNo.: 253308F4
Source: Rabbit	UNIPROT ID: Q8WYQ3	
Isotype: IgG	Full Name: coiled-coil-helix-coiled-coil-helix domain containing 10	
Immunogen Catalog Number: AG22598	Calculated MW: 14 kDa	
	Observed MW: 14-18 kDa	

Applications

Tested Applications:
WB, Cytometric bead array, Indirect ELISA

Species Specificity:
human, mouse, rat

Product Information

87812-3-PBS targets CHCHD10 as part of a matched antibody pair:

MP03220-1: 87812-2-PBS capture and 87812-3-PBS detection (validated in Cytometric bead array)

Unconjugated rabbit recombinant monoclonal antibody in PBS only (BSA and azide free) storage buffer at a concentration of 1 mg/mL, ready for conjugation. Created using Proteintech's proprietary in-house recombinant technology. Recombinant production enables unrivalled batch-to-batch consistency, easy scale-up, and future security of supply.

This conjugation ready format makes antibodies ideal for use in many applications including: ELISAs, multiplex assays requiring matched pairs, mass cytometry, and multiplex imaging applications. Antibody use should be optimized by the end user for each application and assay.

Background Information

CHCHD10 is a mitochondrial protein that is enriched at cristae junctions in the intermembrane space and is likely involved in mitochondrial genome stability and maintenance of cristae junctions. Mutations in CHCHD10 have recently been described as a cause of frontotemporal dementia (FTD) comorbid with amyotrophic lateral sclerosis (ALS).

Storage

Storage:
Store at -80°C.

Storage Buffer:
PBS only, pH7.3

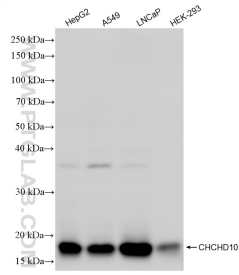
For technical support and original validation data for this product please contact:

T: 1 (888) 4PTGLAB (1-888-478-4522) (toll free in USA), or 1(312) 455-8498 (outside USA)

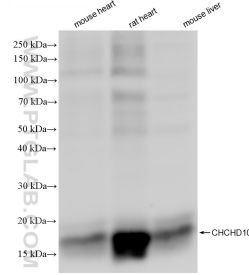
E: proteintech@ptglab.com
W: ptglab.com

This product is exclusively available under Proteintech Group brand and is not available to purchase from any other manufacturer.

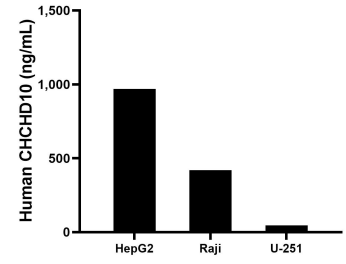
Selected Validation Data



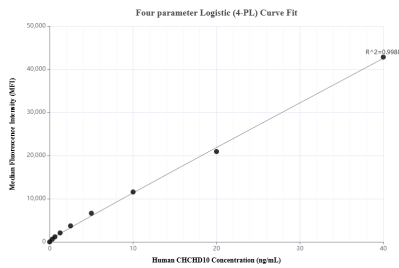
Various lysates were subjected to SDS PAGE followed by western blot with 87812-3-RR (CHCHD10 antibody) at dilution of 1:1000 incubated at room temperature for 1.5 hours. This data was developed using the same antibody clone with 87812-3-PBS in a different storage buffer formulation.



Various lysates were subjected to SDS PAGE followed by western blot with 87812-3-RR (CHCHD10 antibody) at dilution of 1:1000 incubated at room temperature for 1.5 hours. This data was developed using the same antibody clone with 87812-3-PBS in a different storage buffer formulation.



The mean CHCHD10 concentration was determined to be 969.5 ng/mL in HepG2 cell extract based on a 1.2 mg/mL extract load, 419.8 ng/mL in Raji cell extract based on a 1.2 mg/mL extract load, 46.1 ng/mL in U-251 cell extract based on a 1.4 mg/mL extract load.



Cytometric bead array standard curve of MP03220-1, CHCHD10 Recombinant Matched Antibody Pair, PBS Only. Capture antibody: 87812-2-PBS. Detection antibody: 87812-3-PBS. Standard: Ag22598. Range: 0.312-40 ng/mL.