

For Research Use Only

OPCML Recombinant monoclonal antibody, PBS Only

Catalog Number: 87815-1-PBS



Basic Information

Catalog Number: 87815-1-PBS	GenBank Accession Number: NM_001012393.5	Purification Method: Protein A purification
Size: 100ug , Concentration: 1 mg/ml by Nanodrop;	GeneID (NCBI): 4978	CloneNo.: 252030F1
Source: Rabbit	UNIPROT ID: Q14982-2	
Isotype: IgG	Full Name: opioid binding protein/cell adhesion molecule-like	
Immunogen Catalog Number: EG6020	Calculated MW: 37 kDa	
	Observed MW: 40 kDa, 60 kDa	

Applications

Tested Applications:
WB, IF-P, Indirect ELISA

Species Specificity:
human, rat

Background Information

OPCML, also called opioid-binding cell adhesion molecule (OBCAM), belongs to the IgLON limbic system-associated membrane protein (LSAMP, OPCML/OBCAM, neurotrimin) family of IgG domain-containing glycosylphosphatidylinositol-anchored cell adhesion molecules. Originally isolated from the brain, OPCML is also expressed in the stomach, ovary, heart, placenta, testis, kidney, liver, pancreas, and colon. OPCML has been identified as a tumour suppressor, which inhibited tumor growth in some cancers, including ovarian cancer, lung cancer, and prostate cancer (PMID: 19176311; 28407749).

Storage

Storage:
Store at -80°C.

Storage Buffer:
PBS only, pH7.3

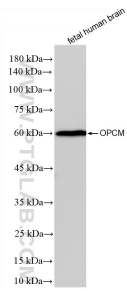
For technical support and original validation data for this product please contact:

T: 1 (888) 4PTGLAB (1-888-478-4522) (toll free in USA), or 1(312) 455-8498 (outside USA)

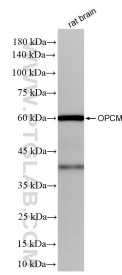
E: proteintech@ptglab.com
W: ptglab.com

This product is exclusively available under Proteintech Group brand and is not available to purchase from any other manufacturer.

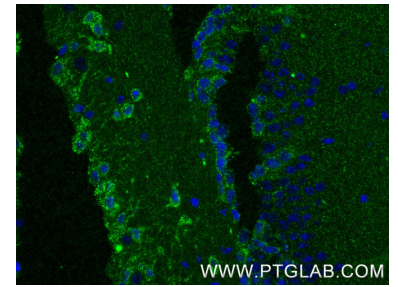
Selected Validation Data



fetal human brain tissue were subjected to SDS PAGE followed by western blot with 87815-1-RR (OPCML antibody) at dilution of 1:5000 incubated at room temperature for 1.5 hours. This data was developed using the same antibody clone with 87815-1-PBS in a different storage buffer formulation.



rat brain tissue were subjected to SDS PAGE followed by western blot with 87815-1-RR (OPCML antibody) at dilution of 1:5000 incubated at room temperature for 1.5 hours. This data was developed using the same antibody clone with 87815-1-PBS in a different storage buffer formulation.



Immunofluorescent analysis of (4% PFA) fixed paraffin-embedded mouse brain tissue using OPCML antibody (87815-1-RR, Clone: 252030F1) at dilution of 1:400 and CoraLite@488-Conjugated Goat Anti-Rabbit IgG(H+L) (SA00013-2). Heat mediated antigen retrieval with Tris-EDTA buffer (pH 9.0). This data was developed using the same antibody clone with 87815-1-PBS in a different storage buffer formulation.