

For Research Use Only

# OPCML Recombinant monoclonal antibody

Catalog Number:87815-1-RR



## Basic Information

|  |   |  |
|--|---|--|
| <b>Catalog Number:</b><br>87815-1-RR                           | <b>GenBank Accession Number:</b><br>NM_001012393.5                      | <b>Purification Method:</b><br>Protein A purification                    |
| <b>Size:</b><br>100ul , Concentration: 1000 µg/ml by Nanodrop; | <b>GeneID (NCBI):</b><br>4978   | <b>CloneNo.:</b><br>252030F1   |
| <b>Source:</b><br>Rabbit                                       | <b>UNIPROT ID:</b><br>Q14982-2  | <b>Recommended Dilutions:</b><br>WB: 1:2000-1:10000<br>IF-P: 1:200-1:800 |
| <b>Isotype:</b><br>IgG   | <b>Full Name:</b><br>opioid binding protein/cell adhesion molecule-like |  |
| <b>Immunogen Catalog Number:</b><br>EG6020                     | <b>Calculated MW:</b><br>37 kDa   |  |
|  | <b>Observed MW:</b><br>40 kDa, 60 kDa                                   |  |

## Applications

|  |   |
|--|---|
| <b>Tested Applications:</b><br>WB, IF-P, ELISA   | <b>Positive Controls:</b>   |
| <b>Species Specificity:</b><br>human, mouse, rat | <b>WB :</b> fetal human brain tissue, rat brain tissue<br><b>IF-P :</b> mouse brain tissue, |

## Background Information

OPCML, also called opioid-binding cell adhesion molecule (OBCAM), belongs to the IgLON limbic system-associated membrane protein (LSAMP, OPCML/OBCAM, neurotrimin) family of IgG domain-containing glycosylphosphatidylinositol-anchored cell adhesion molecules. Originally isolated from the brain, OPCML is also expressed in the stomach, ovary, heart, placenta, testis, kidney, liver, pancreas, and colon. OPCML has been identified as a tumour suppressor, which inhibited tumor growth in some cancers, including ovarian cancer, lung cancer, and prostate cancer (PMID: 19176311; 28407749).

## Storage

**Storage:**  
Store at -20°C. Stable for one year after shipment.  
**Storage Buffer:**  
PBS with 0.02% sodium azide and 50% glycerol, pH7.3  
Aliquoting is unnecessary for -20°C storage

\*\*\* 20ul sizes contain 0.1% BSA

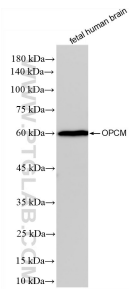
For technical support and original validation data for this product please contact:

T: 1 (888) 4PTGLAB (1-888-478-4522) (toll free in USA), or 1(312) 455-8498 (outside USA)

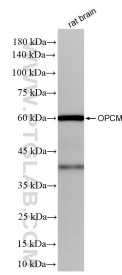
E: proteintech@ptglab.com  
W: ptglab.com

This product is exclusively available under Proteintech Group brand and is not available to purchase from any other manufacturer.

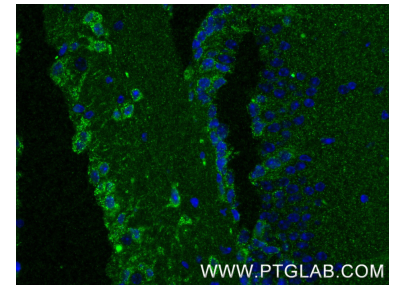
## Selected Validation Data



fetal human brain tissue were subjected to SDS PAGE followed by western blot with 87815-1-RR (OPCML antibody) at dilution of 1:5000 incubated at room temperature for 1.5 hours.



rat brain tissue were subjected to SDS PAGE followed by western blot with 87815-1-RR (OPCML antibody) at dilution of 1:5000 incubated at room temperature for 1.5 hours.



Immunofluorescent analysis of (4% PFA) fixed paraffin-embedded mouse brain tissue using OPCML antibody (87815-1-RR, Clone: 252030F1) at dilution of 1:400 and CoraLite@488-Conjugated Goat Anti-Rabbit IgG(H+L) (SA00013-2). Heat mediated antigen retrieval with Tris-EDTA buffer (pH 9.0).