

For Research Use Only

NKG2E Recombinant monoclonal antibody

Catalog Number:87818-1-RR



Basic Information

Catalog Number: 87818-1-RR	GenBank Accession Number: NM_002261.3	Purification Method: Protein A purification
Size: 100ul , Concentration: 1000 µg/ml by Nanodrop;	GeneID (NCBI): 3823	CloneNo.: 251269E10
Source: Rabbit	UNIPROT ID: Q07444-1	Recommended Dilutions: WB: 1:1000-1:6000
Isotype: IgG	Full Name: killer cell lectin-like receptor subfamily C, member 3	
Immunogen Catalog Number: EG4703	Calculated MW: 37 kDa	
	Observed MW: 45-60 kDa	

Applications

Tested Applications: WB, ELISA	Positive Controls: WB : Recombinant protein,
Species Specificity: human	

Background Information

NKG2E, also known as killer cell lectin-like receptor subfamily C member 3 (KLRC3), is a transmembrane protein primarily expressed on the surface of natural killer (NK) cells and some cytotoxic T-cells. As a member of the NKG2 family, it functions as a receptor for the recognition of non-classical MHC class I molecule HLA-E, playing a role in immune surveillance. Structurally, NKG2E is a type II membrane protein containing a C-type lectin domain in its extracellular region. The immunogenic sequence of NKG2E shares 88% homology with that of NKG2A, leading to cross-reactivity.

Storage

Storage:
Store at -20°C. Stable for one year after shipment.
Storage Buffer:
PBS with 0.02% sodium azide and 50% glycerol, pH7.3
Aliquoting is unnecessary for -20°C storage

*** 20ul sizes contain 0.1% BSA

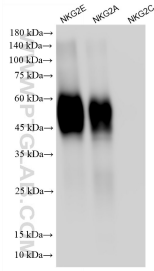
For technical support and original validation data for this product please contact:

T: 1 (888) 4PTGLAB (1-888-478-4522) (toll free in USA), or 1(312) 455-8498 (outside USA)

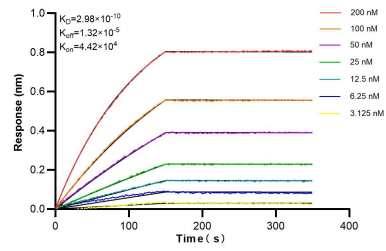
E: proteintech@ptglab.com
W: ptglab.com

This product is exclusively available under Proteintech Group brand and is not available to purchase from any other manufacturer.

Selected Validation Data



Recombinant protein were subjected to SDS PAGE followed by western blot with 87818-1-RR (NKG2E antibody) at dilution of 1:3000 incubated at room temperature for 1.5 hours.



Biolayer interferometry (BLI) kinetic assays of 87818-1-RR against Human NKG2E were performed. The affinity constant is 0.298 nM.