

For Research Use Only

SLC1A5/ASCT2 Recombinant monoclonal antibody

Catalog Number: 87833-2-RR



Basic Information

Catalog Number: 87833-2-RR	GenBank Accession Number: BC000062	Purification Method: Protein A purification
Size: 100ul, Concentration: 1000 µg/ml by Nanodrop;	GeneID (NCBI): 6510	CloneNo.: 253442A8
Source: Rabbit	UNIPROT ID: Q15758	Recommended Dilutions: WB: 1:1000-1:4000 IHC: 1:500-1:2000
Isotype: IgG	Full Name: solute carrier family 1 (neutral amino acid transporter), member 5	
	Calculated MW: 541 aa, 57 kDa	
	Observed MW: 55-70 kDa	

Applications

Tested Applications:

WB, IHC, ELISA

Species Specificity:

human

Note-IHC: suggested antigen retrieval with TE buffer pH 9.0; (*) Alternatively, antigen retrieval may be performed with citrate buffer pH 6.0

Positive Controls:

WB : HeLa cells, HT-29 cells

IHC : human colon cancer tissue,

Background Information

SLC1A5 (Solute Carrier Family 1, member 5), also named as ASCT2, a major glutamine transporter belonging to the SLC1 family and localized in the plasma membrane of several body districts. Consistent with the functions exerted by glutamine, SLC1A5 is involved in uptake of essential amino acids, activation of mTORC1 and glutamine-dependent tumor cell survival and growth. SLC1A5 is highly expressed in various malignancies and plays a critical role in the transformation, growth and survival of cancer cells (PMID: 30234109). High SLC1A5 expression is associated with poor prognosis in clear-cell renal cell carcinoma (PMID: 26599282).

Storage

Storage:

Store at -20°C. Stable for one year after shipment.

Storage Buffer:

PBS with 0.02% sodium azide and 50% glycerol, pH7.3

Aliquoting is unnecessary for -20°C storage

*** 20ul sizes contain 0.1% BSA

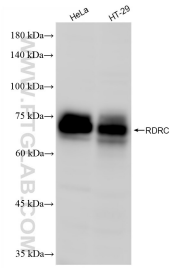
For technical support and original validation data for this product please contact:

T: 1 (888) 4PTGLAB (1-888-478-4522) (toll free in USA), or 1(312) 455-8498 (outside USA)

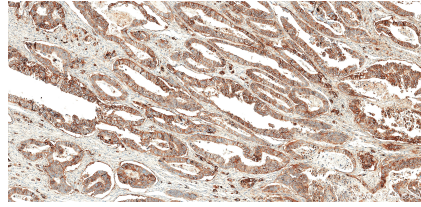
E: proteintech@ptglab.com
W: ptglab.com

This product is exclusively available under Proteintech Group brand and is not available to purchase from any other manufacturer.

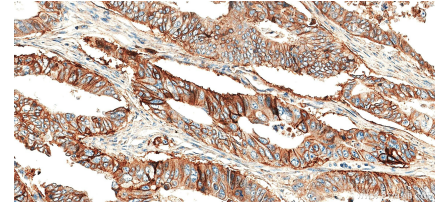
Selected Validation Data



Various lysates were subjected to SDS PAGE followed by western blot with 87833-2-RR (RDRC antibody) at dilution of 1:2000 incubated at room temperature for 1.5 hours.



Immunohistochemical analysis of paraffin-embedded human colon cancer tissue slide using 87833-2-RR (SLC1A5/ASCT2 antibody) at dilution of 1:1000 (under 10x lens). Heat mediated antigen retrieval with Tris-EDTA buffer (pH 9.0).



Immunohistochemical analysis of paraffin-embedded human colon cancer tissue slide using 87833-2-RR (SLC1A5/ASCT2 antibody) at dilution of 1:1000 (under 40x lens). Heat mediated antigen retrieval with Tris-EDTA buffer (pH 9.0).