

For Research Use Only

BMI1 Recombinant monoclonal antibody, PBS Only (Capture)

Catalog Number: 87836-4-PBS



Basic Information

Catalog Number: 87836-4-PBS	GenBank Accession Number: BC011652	Purification Method: Protein A purification
Size: 100ug, Concentration: 1 mg/ml by Nanodrop;	GeneID (NCBI): 648	CloneNo.: 253339E6
Source: Rabbit	UNIPROT ID: P35226	
Isotype: IgG	Full Name: BMI1 polycomb ring finger oncogene	
Immunogen Catalog Number: AG1286	Calculated MW: 37 kDa	

Applications

Tested Applications:
Sandwich ELISA, Indirect ELISA

Species Specificity:
human

Product Information

87836-4-PBS targets BMI1 as part of a matched antibody pair:

MP03232-2: 87836-4-PBS capture and 87836-2-PBS detection (validated in Sandwich ELISA)

Unconjugated rabbit recombinant monoclonal antibody in PBS only (BSA and azide free) storage buffer at a concentration of 1 mg/mL, ready for conjugation. Created using Proteintech's proprietary in-house recombinant technology. Recombinant production enables unrivalled batch-to-batch consistency, easy scale-up, and future security of supply.

This conjugation ready format makes antibodies ideal for use in many applications including: ELISAs, multiplex assays requiring matched pairs, mass cytometry, and multiplex imaging applications. Antibody use should be optimized by the end user for each application and assay.

Storage

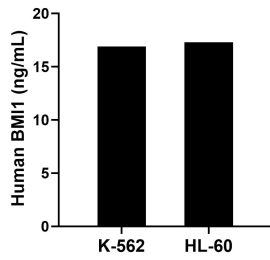
Storage:
Store at -80°C.

Storage Buffer:
PBS only, pH7.3

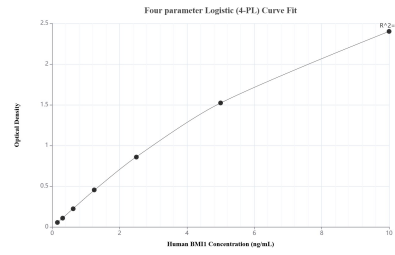
For technical support and original validation data for this product please contact:
T: 1 (888) 4PTGLAB (1-888-478-4522) (toll free in USA), or 1(312) 455-8498 (outside USA) E: proteintech@ptglab.com
W: ptglab.com

This product is exclusively available under Proteintech Group brand and is not available to purchase from any other manufacturer.

Selected Validation Data



The mean BMI 1 concentration was determined to be 16.90 ng/mL in K-562 cell extract based on a 1.20 mg/mL extract load and 17.30 ng/mL in HL-60 cell extract based on a 1.50 mg/mL extract load.



Sandwich ELISA standard curve of MP03232-2, Human BMI 1 Recombinant Matched Antibody Pair - PBS only. 87836-4-PBS was coated to a plate as the capture antibody and incubated with serial dilutions of standard Ag1286. 87836-2-PBS was HRP conjugated as the detection antibody. Range: 0.156-10 ng/mL.