

For Research Use Only

# TMED1 Recombinant monoclonal antibody, PBS Only

Catalog Number: 87837-1-PBS



## Basic Information

**Catalog Number:**

87837-1-PBS

**Size:**

100ug, Concentration: 1 mg/ml by Nanodrop;

**Source:**

Rabbit

**Isotype:**

IgG

**Immunogen Catalog Number:**

EG5903

**GenBank Accession Number:**

NM\_006858

**GeneID (NCBI):**

11018

**UNIPROT ID:**

Q13445

**Full Name:**

transmembrane emp24 protein transport domain containing 1

**Calculated MW:**

25 kDa

**Observed MW:**

30 kDa

**Purification Method:**

Protein A purification

**CloneNo.:**

253497F4

## Applications

**Tested Applications:**

WB, IHC, IF/ICC, Indirect ELISA

**Species Specificity:**

human

## Background Information

Transmembrane p24 trafficking protein 1 (TMED1) belongs to the TMED protein family, also known as the p24 family, and plays a part in protein vesicular trafficking. As the critical regulator of protein trafficking along the secretory pathway, the TMED proteins influence the composition, structure, and function of the endoplasmic reticulum and the Golgi apparatus. Disruption of the secretory pathway could affect cell differentiation and survival, ultimately resulting in disease. (PMID: 38392302)

## Storage

**Storage:**

Store at -80°C.

**Storage Buffer:**

PBS only, pH7.3

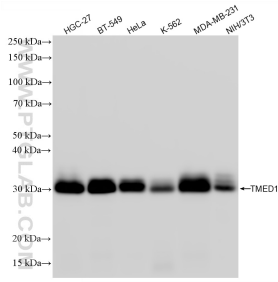
For technical support and original validation data for this product please contact:

T: 1 (888) 4PTGLAB (1-888-478-4522) (toll free in USA), or 1(312) 455-8498 (outside USA)

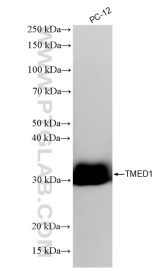
E: [proteintech@ptglab.com](mailto:proteintech@ptglab.com)  
W: [ptglab.com](http://ptglab.com)

**This product is exclusively available under Proteintech Group brand and is not available to purchase from any other manufacturer.**

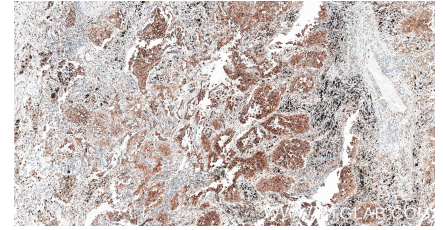
## Selected Validation Data



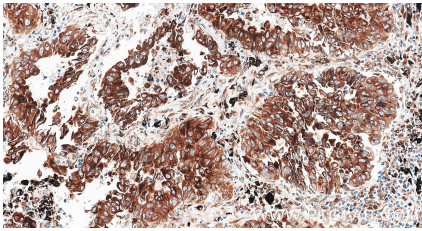
Various lysates were subjected to SDS PAGE followed by western blot with 87837-1-RR (TMED1 antibody) at dilution of 1:10000 incubated at room temperature for 1.5 hours. This data was developed using the same antibody clone with 87837-1-PBS in a different storage buffer formulation.



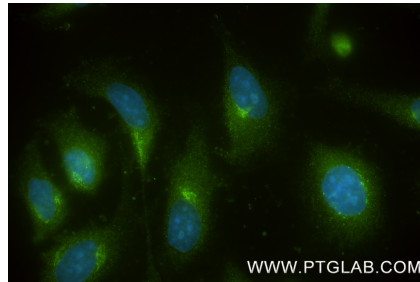
PC-12 cells were subjected to SDS PAGE followed by western blot with 87837-1-RR (TMED1 antibody) at dilution of 1:10000 incubated at room temperature for 1.5 hours. This data was developed using the same antibody clone with 87837-1-PBS in a different storage buffer formulation.



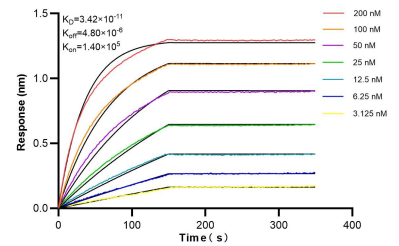
Immunohistochemical analysis of paraffin-embedded Human lung cancer (Adenocarcinoma) slide using 87837-1-RR (TMED1 antibody) at dilution of 1:1000 (under 10x lens). Heat mediated antigen retrieval with Tris-EDTA buffer (pH 9.0). This data was developed using the same antibody clone with 87837-1-PBS in a different storage buffer formulation.



Immunohistochemical analysis of paraffin-embedded Human lung cancer (Adenocarcinoma) slide using 87837-1-RR (TMED1 antibody) at dilution of 1:1000 (under 40x lens). Heat mediated antigen retrieval with Tris-EDTA buffer (pH 9.0). This data was developed using the same antibody clone with 87837-1-PBS in a different storage buffer formulation.



Immunofluorescent analysis of (-20°C Methanol) fixed HeLa cells using TMED1 antibody (87837-1-RR, Clone: 253497F4) at dilution of 1:400 and CoralLite®488-Conjugated Goat Anti-Rabbit IgG(H+L) (SA00013-2). This data was developed using the same antibody clone with 87837-1-PBS in a different storage buffer formulation.



Bi-layer interferometry (BLI) kinetic assays of 87837-1-RR against Human TMED1 were performed. The affinity constant is 34.2 pM.