

For Research Use Only

TMED1 Recombinant monoclonal antibody

Catalog Number: 87837-1-RR



Basic Information

Catalog Number: 87837-1-RR	GenBank Accession Number: NM_006858	Purification Method: Protein A purification
Size: 100ul , Concentration: 1000 µg/ml by Nanodrop;	GeneID (NCBI): 11018	CloneNo.: 253497F4
Source: Rabbit	UNIPROT ID: Q13445	Recommended Dilutions: WB: 1:5000-1:50000 IHC: 1:500-1:2000 IF/ICC: 1:200-1:800
Isotype: IgG	Full Name: transmembrane emp24 protein transport domain containing 1	
Immunogen Catalog Number: EG5903	Calculated MW: 25 kDa	
	Observed MW: 30 kDa	

Applications

Tested Applications:
WB, IHC, IF/ICC, ELISA

Species Specificity:
human

Note-IHC: suggested antigen retrieval with TE buffer pH 9.0; (*) Alternatively, antigen retrieval may be performed with citrate buffer pH 6.0

Positive Controls:

WB: HGC-27 cells, PC-12 cells, BT-549 cells, HeLa cells, K-562 cells, MDA-MB-231 cells, NIH/3T3 cells

IHC: Human lung cancer Adenocarcinoma ,

IF/ICC: HeLa cells,

Background Information

Transmembrane p24 trafficking protein 1 (TMED1) belongs to the TMED protein family, also known as the p24 family, and plays a part in protein vesicular trafficking. As the critical regulator of protein trafficking along the secretory pathway, the TMED proteins influence the composition, structure, and function of the endoplasmic reticulum and the Golgi apparatus. Disruption of the secretory pathway could affect cell differentiation and survival, ultimately resulting in disease.(PMID: 38392302)

Storage

Storage:
Store at -20°C. Stable for one year after shipment.
Storage Buffer:
PBS with 0.02% sodium azide and 50% glycerol, pH7.3
Aliquoting is unnecessary for -20°C storage

***** 20ul sizes contain 0.1% BSA**

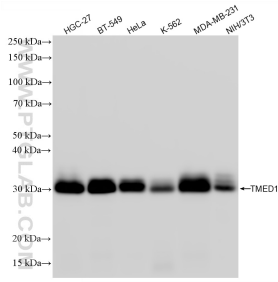
For technical support and original validation data for this product please contact:

T: 1 (888) 4PTGLAB (1-888-478-4522) (toll free in USA), or 1(312) 455-8498 (outside USA)

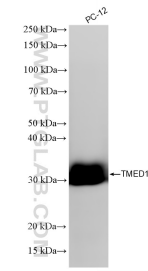
E: proteintech@ptglab.com
W: ptglab.com

This product is exclusively available under Proteintech Group brand and is not available to purchase from any other manufacturer.

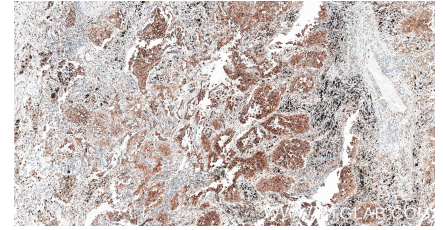
Selected Validation Data



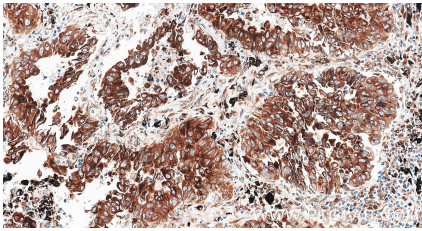
Various lysates were subjected to SDS PAGE followed by western blot with 87837-1-RR (TMED1 antibody) at dilution of 1:10000 incubated at room temperature for 1.5 hours.



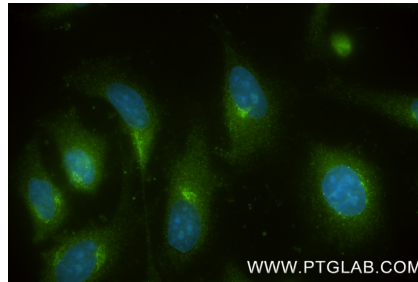
PC-12 cells were subjected to SDS PAGE followed by western blot with 87837-1-RR (TMED1 antibody) at dilution of 1:10000 incubated at room temperature for 1.5 hours.



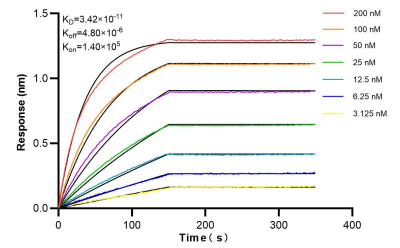
Immunohistochemical analysis of paraffin-embedded Human lung cancer (Adenocarcinoma) slide using 87837-1-RR (TMED1 antibody) at dilution of 1:1000 (under 10x lens). Heat mediated antigen retrieval with Tris-EDTA buffer (pH 9.0).



Immunohistochemical analysis of paraffin-embedded Human lung cancer (Adenocarcinoma) slide using 87837-1-RR (TMED1 antibody) at dilution of 1:1000 (under 40x lens). Heat mediated antigen retrieval with Tris-EDTA buffer (pH 9.0).



Immunofluorescent analysis of (-20°C Methanol) fixed HeLa cells using TMED1 antibody (87837-1-RR, Clone: 253497F4) at dilution of 1:400 and CoralLite®488-Conjugated Goat Anti-Rabbit IgG(H+L) (SA00013-2).



Bi-layer interferometry (BLI) kinetic assays of 87837-1-RR against Human TMED1 were performed. The affinity constant is 34.2 pM.