

For Research Use Only

# SLC28A2 Recombinant monoclonal antibody, PBS Only

Catalog Number: 87846-1-PBS



## Basic Information

**Catalog Number:**

87846-1-PBS

**Size:**

100ug, Concentration: 1 mg/ml by Nanodrop;

**Source:**

Rabbit

**Isotype:**

IgG

**GenBank Accession Number:**

BC093737

**GeneID (NCBI):**

9153

**UNIPROT ID:**

O43868

**Full Name:**

solute carrier family 28 (sodium-coupled nucleoside transporter), member 2

**Calculated MW:**

658 aa, 72 kDa

**Observed MW:**

65-71 kDa

**Purification Method:**

Protein A purification

**CloneNo.:**

253453A3

## Applications

**Tested Applications:**

WB, Indirect ELISA

**Species Specificity:**

human, mouse, rat

## Background Information

Solute carrier family 28 member 2 (SLC28A2), also called concentrative nucleoside transporter 2 (CNT2), is found mainly in the gastrointestinal tract and kidney (PMID: 10087507). The SLC28A2 gene, which is mapped to chromosome 15q21.1 in humans, encodes a sodium/nucleoside symporter preferentially located at the apical side of polarized epithelia, thereby mediating the unidirectional uptake of sodium ions coupled with nucleosides (PMID: 29928232). SLC28A2, a sodium-dependent and purine-selective transporter, has been reported to translocate antiviral purine analogs (PMID: 36244249). SLC28A2 gene, is expressed in luminal membrane of intestine and mediates efficient transport of dietary purine nucleosides and nucleoside analog ribavirin (PMID: 30679935).

## Storage

**Storage:**

Store at -80°C.

**Storage Buffer:**

PBS only, pH7.3

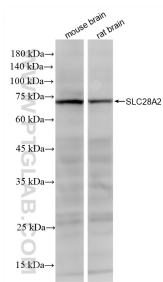
For technical support and original validation data for this product please contact:

T: 1 (888) 4PTGLAB (1-888-478-4522) (toll free in USA), or 1(312) 455-8498 (outside USA)

E: [proteintech@ptglab.com](mailto:proteintech@ptglab.com)  
W: [ptglab.com](http://ptglab.com)

**This product is exclusively available under Proteintech Group brand and is not available to purchase from any other manufacturer.**

## Selected Validation Data



mouse brain tissue were subjected to SDS PAGE followed by western blot with 87846-1-RR (SLC28A2 antibody) at dilution of 1:1000 incubated at room temperature for 1.5 hours. This data was developed using the same antibody clone with 87846-1-PBS in a different storage buffer formulation.