

For Research Use Only

SLC28A2 Recombinant monoclonal antibody

Catalog Number: 87846-1-RR



Basic Information

Catalog Number: 87846-1-RR	GenBank Accession Number: BC093737	Purification Method: Protein A purification
Size: 100ul , Concentration: 1000 µg/ml by Nanodrop;	GeneID (NCBI): 9153	CloneNo.: 253453A3
Source: Rabbit	UNIPROT ID: O43868	Recommended Dilutions: WB: 1:500-1:2000
Isotype: IgG	Full Name: solute carrier family 28 (sodium-coupled nucleoside transporter), member 2	
	Calculated MW: 658 aa, 72 kDa	
	Observed MW: 65-71 kDa	

Applications

Tested Applications: WB, ELISA	Positive Controls: WB : mouse brain tissue, rat brain tissue
Species Specificity: human, mouse, rat	

Background Information

Solute carrier family 28 member 2 (SLC28A2), also called concentrative nucleoside transporter 2 (CNT2), is found mainly in the gastrointestinal tract and kidney (PMID: 10087507). The SLC28A2 gene, which is mapped to chromosome 15q21.1 in humans, encodes a sodium/nucleoside symporter preferentially located at the apical side of polarized epithelia, thereby mediating the unidirectional uptake of sodium ions coupled with nucleosides (PMID: 29928232). SLC28A2, a sodium-dependent and purine-selective transporter, has been reported to translocate antiviral purine analogs (PMID: 36244249). SLC28A2 gene, is expressed in luminal membrane of intestine and mediates efficient transport of dietary purine nucleosides and nucleoside analog ribavirin (PMID: 30679935).

Storage

Storage:
Store at -20°C. Stable for one year after shipment.
Storage Buffer:
PBS with 0.02% sodium azide and 50% glycerol, pH7.3
Aliquoting is unnecessary for -20°C storage

*** 20ul sizes contain 0.1% BSA

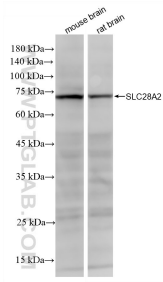
For technical support and original validation data for this product please contact:

T: 1 (888) 4PTGLAB (1-888-478-4522) (toll free in USA), or 1(312) 455-8498 (outside USA)

E: proteintech@ptglab.com
W: ptglab.com

This product is exclusively available under Proteintech Group brand and is not available to purchase from any other manufacturer.

Selected Validation Data



mouse brain tissue were subjected to SDS PAGE followed by western blot with 87846-1-RR (SLC28A2 antibody) at dilution of 1:1000 incubated at room temperature for 1.5 hours.