

For Research Use Only

AP1B1 Recombinant monoclonal antibody

Catalog Number:87859-2-RR



Basic Information

Catalog Number:

87859-2-RR

Size:

100ul , Concentration: 1000 µg/ml by Nanodrop;

Source:

Rabbit

Isotype:

IgG

Immunogen Catalog Number:

AG10417

GenBank Accession Number:

BC046242

GeneID (NCBI):

162

UNIPROT ID:

Q10567

Full Name:

adaptor-related protein complex 1, beta 1 subunit

Calculated MW:

919 aa, 101 kDa

Observed MW:

101 kDa

Purification Method:

Protein A purification

CloneNo.:

253524D8

Recommended Dilutions:

WB: 1:5000-1:50000

IP: 0.5-4.0 ug for 1.0-3.0 mg of total protein lysate

IF/ICC: 1:500-1:2000

Applications

Tested Applications:

WB, IF/ICC, IP, ELISA

Species Specificity:

human

Positive Controls:

WB : HT-29 cells, HEK-293 cells, HeLa cells, A431 cells

IP : HEK-293 cells,

IF/ICC : HepG2 cells,

Background Information

AP1B1 is a subunit of the adaptor complex AP-1 and is a member of the adaptin protein family. Adaptor protein (AP) complexes are cytosolic heterotetramers that mediate the sorting of membrane proteins in the secretory and endocytic pathways. AP-1 is found at the cytoplasmic face of coated vesicles located at the Golgi complex, where it mediates both the recruitment of clathrin to the membrane and the recognition of sorting signals within the cytosolic tails of transmembrane receptors.

Storage

Storage:

Store at -20°C. Stable for one year after shipment.

Storage Buffer:

PBS with 0.02% sodium azide and 50% glycerol, pH7.3

Aliquoting is unnecessary for -20°C storage

*** 20ul sizes contain 0.1% BSA

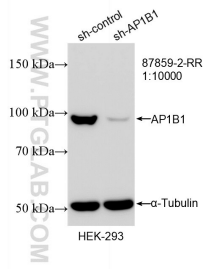
For technical support and original validation data for this product please contact:

T: 1 (888) 4PTGLAB (1-888-478-4522) (toll free in USA), or 1(312) 455-8498 (outside USA)

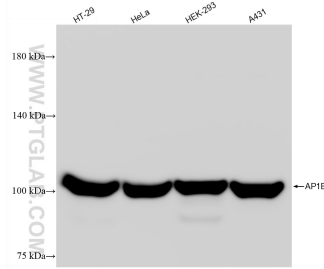
E: proteintech@ptglab.com
W: ptglab.com

This product is exclusively available under Proteintech Group brand and is not available to purchase from any other manufacturer.

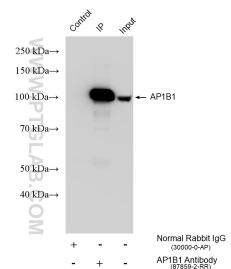
Selected Validation Data



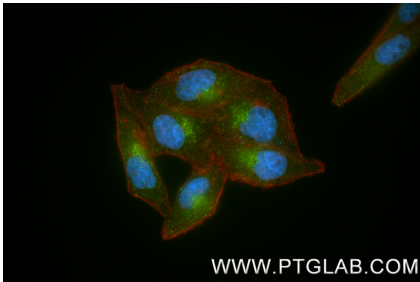
WB result of AP1B1 antibody (87859-2-RR; 1:10000; incubated at room temperature for 1.5 hours) with sh-Control and sh-AP1B1 transfected HEK-293 cells.



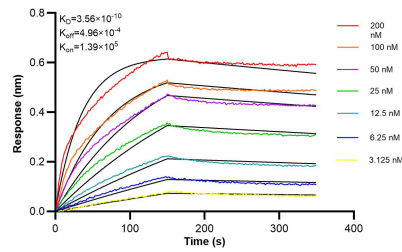
Various lysates were subjected to SDS PAGE followed by western blot with 87859-2-RR (AP1B1 antibody) at dilution of 1:10000 incubated at room temperature for 1.5 hours.



IP result of anti-AP1B1 (IP:87859-2-RR, 4ug; Detection:87859-2-RR 1:3000) with HEK-293 cells lysate 1560 ug.



Immunofluorescent analysis of (4% PFA) fixed HepG2 cells using AP1B1 antibody (87859-2-RR, Clone: 253524D8) at dilution of 1:1000 and CoraLite@488-Conjugated Goat Anti-Rabbit IgG(H+L) (SA00013-2), CL594-Phalloidin (red).



Biolayer interferometry (BLI) kinetic assays of 87859-2-RR against Human AP1B1 were performed. The affinity constant is 0.356 nM.