

For Research Use Only

AP1B1 Recombinant monoclonal antibody, PBS Only (Capture)

Catalog Number: 87859-3-PBS



Basic Information

Catalog Number: 87859-3-PBS	GenBank Accession Number: BC046242	Purification Method: Protein A purification
Size: 100ug, Concentration: 1 mg/ml by Nanodrop;	GeneID (NCBI): 162	CloneNo.: 253524D12
Source: Rabbit	UNIPROT ID: Q10567	
Isotype: IgG	Full Name: adaptor-related protein complex 1, beta 1 subunit	
Immunogen Catalog Number: AG10417	Calculated MW: 919 aa, 101 kDa	

Applications

Tested Applications:
Cytometric bead array, Indirect ELISA

Species Specificity:
human

Product Information

87859-3-PBS targets AP1B1 as part of a matched antibody pair.

MP03244-1: 87859-3-PBS capture and 87859-2-PBS detection (validated in Cytometric bead array)

Unconjugated rabbit recombinant monoclonal antibody in PBS only (BSA and azide free) storage buffer at a concentration of 1 mg/mL, ready for conjugation. Created using Proteintech's proprietary in-house recombinant technology. Recombinant production enables unrivalled batch-to-batch consistency, easy scale-up, and future security of supply.

This conjugation ready format makes antibodies ideal for use in many applications including: ELISAs, multiplex assays requiring matched pairs, mass cytometry, and multiplex imaging applications. Antibody use should be optimized by the end user for each application and assay.

Storage

Storage:
Store at -80°C.

Storage Buffer:
PBS only, pH7.3

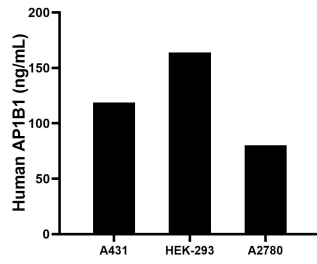
For technical support and original validation data for this product please contact:

T: 1 (888) 4PTGLAB (1-888-478-4522) (toll free in USA), or 1(312) 455-8498 (outside USA)

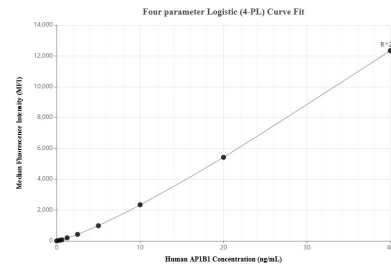
E: proteintech@ptglab.com
W: ptglab.com

This product is exclusively available under Proteintech Group brand and is not available to purchase from any other manufacturer.

Selected Validation Data



The mean AP1B1 concentration was determined to be 118.8 ng/mL in A431 cell extract based on a 1.2 mg/mL extract load, 163.8 ng/mL in HEK-293 cell extract based on a 1.5 mg/mL extract load, 80.2 ng/mL in A2780 cell extract based on a 1.2 mg/mL extract load.



Cytometric bead array standard curve of MP03244-1, AP1B1 Recombinant Matched Antibody Pair, PBS Only. Capture antibody: 87859-3-PBS. Detection antibody: 87859-2-PBS. Standard: Ag10417. Range: 0.312-40 ng/mL.