

For Research Use Only

PTGER2 Recombinant monoclonal antibody

Catalog Number: 87864-1-RR



Basic Information

Catalog Number: 87864-1-RR	GenBank Accession Number: NM_000956.3	Purification Method: Protein A purification
Size: 100ul , Concentration: 1000 µg/ml by Nanodrop;	GeneID (NCBI): 5732	CloneNo.: 260016B10
Source: Rabbit	UNIPROT ID: P43116	Recommended Dilutions: WB: 1:1000-1:4000
Isotype: IgG	Full Name: prostaglandin E receptor 2 (subtype EP2), 53kDa	
Immunogen Catalog Number: AG35470	Calculated MW: 40kDa 358aa	
	Observed MW: 45 kDa	

Applications

Tested Applications: WB, ELISA	Positive Controls: WB : JAR cells,
Species Specificity: human	

Background Information

PTGER2 (prostaglandin E receptor 2) is a gene that encodes the EP2 receptor, a G protein-coupled receptor (GPCR) that binds prostaglandin E2 (PGE2). Located on chromosome 14q22.1, this receptor primarily couples to the Gs protein and activates adenylate cyclase, leading to increased intracellular cAMP levels. PTGER2 plays diverse roles in inflammation, cancer, neuroprotection, and immune regulation; its activation can either promote tumor cell proliferation and invasion or mediate anti-inflammatory effects depending on the context. Mutations in this gene are associated with aspirin-induced asthma susceptibility, making it a significant therapeutic target for inflammatory diseases, cancer, and conditions like glaucoma and pulmonary hypertension. PTGER2 has multiple glycosylation sites.

Storage

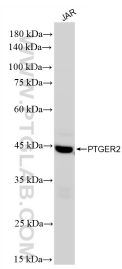
Storage:
Store at -20°C. Stable for one year after shipment.
Storage Buffer:
PBS with 0.02% sodium azide and 50% glycerol, pH7.3
Aliquoting is unnecessary for -20°C storage

*** 20ul sizes contain 0.1% BSA

For technical support and original validation data for this product please contact:
T: 1 (888) 4PTGLAB (1-888-478-4522) (toll free in USA), or 1(312) 455-8498 (outside USA)
E: proteintech@ptglab.com
W: ptglab.com

This product is exclusively available under Proteintech Group brand and is not available to purchase from any other manufacturer.

Selected Validation Data



JAR cells were subjected to SDS PAGE followed by western blot with 87864-1-RR (PTGER2 antibody) at dilution of 1:2000 incubated at room temperature for 1.5 hours.