

For Research Use Only

PSG8 Recombinant monoclonal antibody, PBS Only

Catalog Number: 87878-3-PBS



Basic Information

Catalog Number: 87878-3-PBS	GenBank Accession Number: NM_182707.3	Purification Method: Protein A purification
Size: 100ug , Concentration: 1 mg/ml by Nanodrop;	GeneID (NCBI): 440533	CloneNo.: 260018G1
Source: Rabbit	UNIPROT ID: Q9UQ74-1	
Isotype: IgG	Full Name: pregnancy specific beta-1-glycoprotein 8	
Immunogen Catalog Number: EG8783	Calculated MW: 48 kDa	
	Observed MW: 45-75 kDa	

Applications

Tested Applications:
WB, IHC, Indirect ELISA

Species Specificity:
human

Background Information

Pregnancy-specific β 1-glycoproteins (PSGs) are predominant proteins synthesized during gestation in humans, primates and rodents (PMID: 5001318; 11133662). In humans, PSGs are mainly secreted by syncytiotrophoblasts, while in rodents they derive from trophoblast giant cells and spongiotrophoblasts (PMID: 9290143). Moreover, PSGs can serve as indicators for blastocyst quality and embryonic viability (PMID: 8671387; 2409861).

Storage

Storage:
Store at -80°C.

Storage Buffer:
PBS only, pH7.3

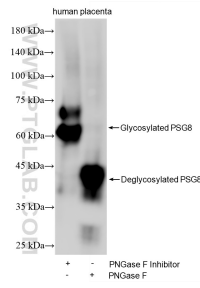
For technical support and original validation data for this product please contact:

T: 1 (888) 4PTGLAB (1-888-478-4522) (toll free in USA), or 1(312) 455-8498 (outside USA)

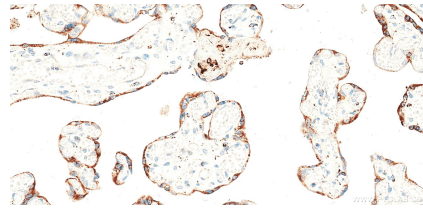
E: proteintech@ptglab.com
W: ptglab.com

This product is exclusively available under Proteintech Group brand and is not available to purchase from any other manufacturer.

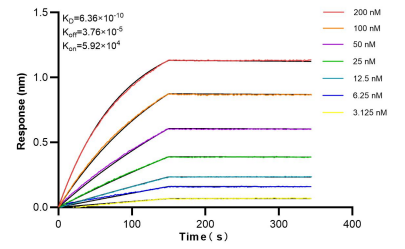
Selected Validation Data



Various lysates were subjected to SDS PAGE followed by western blot with 87878-3-RR (PSG8 antibody) at dilution of 1:10000 incubated at room temperature for 1.5 hours. This data was developed using the same antibody clone with 87878-3-PBS in a different storage buffer formulation.



Immunohistochemical analysis of paraffin-embedded human placenta tissue slide using 87878-3-RR (PSG8 antibody) at dilution of 1:1000 (under 40x lens). Heat mediated antigen retrieval with Tris-EDTA buffer (pH 9.0). This data was developed using the same antibody clone with 87878-3-PBS in a different storage buffer formulation.



Bi-layer interferometry (BLI) kinetic assays of 87878-3-RR against Human PSG8 were performed. The affinity constant is 0.636 nM.