

For Research Use Only

# PSG8 Recombinant monoclonal antibody

Catalog Number: 87878-3-RR



## Basic Information

<b>Catalog Number:</b> 87878-3-RR	<b>GenBank Accession Number:</b> NM_182707.3	<b>Purification Method:</b> Protein A purification
<b>Size:</b> 100ul , Concentration: 1000 µg/ml by Nanodrop;	<b>GeneID (NCBI):</b> 440533	<b>CloneNo.:</b> 260018G1
<b>Source:</b> Rabbit	<b>UNIPROT ID:</b> Q9UQ74-1	<b>Recommended Dilutions:</b> WB: 1:5000-1:50000 IHC: 1:500-1:2000
<b>Isotype:</b> IgG	<b>Full Name:</b> pregnancy specific beta-1-glycoprotein 8	
<b>Immunogen Catalog Number:</b> EG8783	<b>Calculated MW:</b> 48 kDa	
	<b>Observed MW:</b> 45-75 kDa	

## Applications

<b>Tested Applications:</b> WB, IHC, ELISA	<b>Positive Controls:</b>
<b>Species Specificity:</b> human	WB : human placenta tissue, IHC : human placenta tissue,
<b>Note-IHC: suggested antigen retrieval with TE buffer pH 9.0; (*) Alternatively, antigen retrieval may be performed with citrate buffer pH 6.0</b>	

## Background Information

Pregnancy-specific  $\beta$ 1-glycoproteins (PSGs) are predominant proteins synthesized during gestation in humans, primates and rodents (PMID: 5001318; 11133662). In humans, PSGs are mainly secreted by syncytiotrophoblasts, while in rodents they derive from trophoblast giant cells and spongiotrophoblasts (PMID: 9290143). Moreover, PSGs can serve as indicators for blastocyst quality and embryonic viability (PMID: 8671387; 2409861).

## Storage

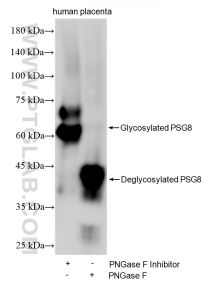
**Storage:**  
Store at -20°C. Stable for one year after shipment.  
**Storage Buffer:**  
PBS with 0.02% sodium azide and 50% glycerol, pH7.3  
Aliquoting is unnecessary for -20°C storage

\*\*\* 20ul sizes contain 0.1% BSA

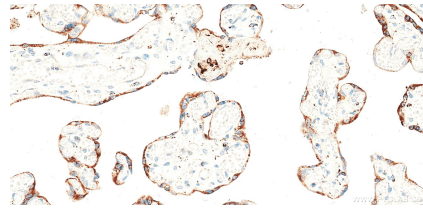
For technical support and original validation data for this product please contact:  
T: 1 (888) 4PTGLAB (1-888-478-4522) (toll free in USA), or 1(312) 455-8498 (outside USA)      E: proteintech@ptglab.com  
W: ptglab.com

This product is exclusively available under Proteintech Group brand and is not available to purchase from any other manufacturer.

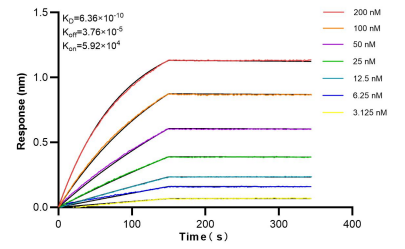
## Selected Validation Data



Various lysates were subjected to SDS PAGE followed by western blot with 87878-3-RR (PSG8 antibody) at dilution of 1:10000 incubated at room temperature for 1.5 hours.



Immunohistochemical analysis of paraffin-embedded human placenta tissue slide using 87878-3-RR (PSG8 antibody) at dilution of 1:1000 (under 40x lens). Heat mediated antigen retrieval with Tris-EDTA buffer (pH 9.0).



Biolayer interferometry (BLI) kinetic assays of 87878-3-RR against Human PSG8 were performed. The affinity constant is 0.636 nM.