

For Research Use Only

PDHX Recombinant monoclonal antibody, PBS Only

Catalog Number: 87880-1-PBS



Basic Information

Catalog Number: 87880-1-PBS	GenBank Accession Number: BC010389	Purification Method: Protein A purification
Size: 100ug , Concentration: 1 mg/ml by Nanodrop;	GeneID (NCBI): 8050	CloneNo.: 253557E3
Source: Rabbit	UNIPROT ID: O00330	
Isotype: IgG	Full Name: pyruvate dehydrogenase complex, component X	
Immunogen Catalog Number: AG21034	Calculated MW: 54 kDa	
	Observed MW: 54 kDa	

Applications

Tested Applications:
WB, Indirect ELISA

Species Specificity:
human, mouse

Background Information

PDHX (Pyruvate dehydrogenase protein X component), an E3-binding protein in the PDC, is acetylated by the p300 at Lys 488, impeding the interaction between PDHX and dihydrolipoyl transacetylase (E2), thereby disrupting PDC assembly to inhibit its activation (PMID: 30012170). PDHX was characterized as a metabolically essential gene for esophageal squamous cell carcinoma (ESCC), and knockdown of PDHX inhibited the proliferation of cancer stem cells (CSCs) and in vivo tumor growth (PMID: 33964039). Western blot analysis detected PDHX at an apparent molecular mass of 54 kDa.

Storage

Storage:
Store at -80°C.

Storage Buffer:
PBS only, pH7.3

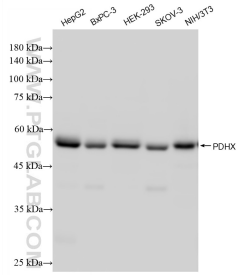
For technical support and original validation data for this product please contact:

T: 1 (888) 4PTGLAB (1-888-478-4522) (toll free in USA), or 1(312) 455-8498 (outside USA)

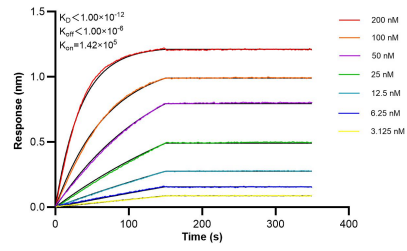
E: proteintech@ptglab.com
W: ptglab.com

This product is exclusively available under Proteintech Group brand and is not available to purchase from any other manufacturer.

Selected Validation Data



Various lysates were subjected to SDS PAGE followed by western blot with 87880-1-RR (PDHX antibody) at dilution of 1:50000 incubated at room temperature for 1.5 hours. This data was developed using the same antibody clone with 87880-1-PBS in a different storage buffer formulation.



Biolayer interferometry (BLI) kinetic assays of 87880-1-RR against Human PDHX were performed. The affinity constant is below 1 pM.