

For Research Use Only

WNT1 Recombinant monoclonal antibody, PBS Only

Catalog Number: 87881-1-PBS



Basic Information

Catalog Number: 87881-1-PBS	GenBank Accession Number: BC074799	Purification Method: Protein A purification
Size: 100ug , Concentration: 1 mg/ml by Nanodrop;	GeneID (NCBI): 7471	CloneNo.: 253400F10
Source: Rabbit	UNIPROT ID: P04628	
Isotype: IgG	Full Name: wingless-type MMTV integration site family, member 1	
Immunogen Catalog Number: AG27380	Observed MW: 41 kDa	

Applications

Tested Applications:
WB, Indirect ELISA

Species Specificity:
human

Background Information

Wingless-related MMTV integration site 1 (Wnt1), a cysteine-rich glycosylated protein related to the Drosophila protein Wingless, has been shown to inhibit microglial inflammatory activation in a variety of CNS diseases, such as ischemic reperfusion injury in the brain, intracerebral hemorrhage, Alzheimer's disease, and Parkinson's disease (PMID: 40025242). Wnt1 is expressed in the dorsal part, and it is necessary for the maintenance of Fgf8 expression. This molecule is essential for the induction of the midbrain and the cerebellum (PMID: 34722541, PMID: 1583219). Wnt1 as a bone anabolic Wnt ligand in long bones and in alveolar bone and cementum formation during tooth maintenance (PMID: 30404864, PMID: 34009051). Wnt1 is a key regulator of neural crest cells, which constitute most of the facial mesenchymal cells (PMID:792502).

Storage

Storage:
Store at -80°C.

Storage Buffer:
PBS only, pH7.3

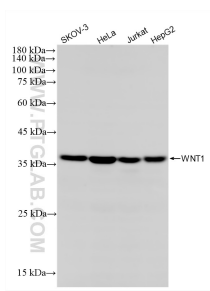
For technical support and original validation data for this product please contact:

T: 1 (888) 4PTGLAB (1-888-478-4522) (toll free in USA), or 1(312) 455-8498 (outside USA)

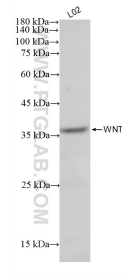
E: proteintech@ptglab.com
W: ptglab.com

This product is exclusively available under Proteintech Group brand and is not available to purchase from any other manufacturer.

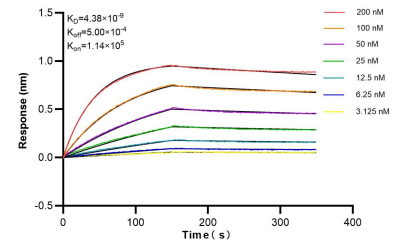
Selected Validation Data



Various lysates were subjected to SDS PAGE followed by western blot with 87881-1-RR (WNT1 antibody) at dilution of 1:10000 incubated at room temperature for 1.5 hours. This data was developed using the same antibody clone with 87881-1-PBS in a different storage buffer formulation.



L02 cells were subjected to SDS PAGE followed by western blot with 87881-1-RR (WNT1 antibody) at dilution of 1:10000 incubated at room temperature for 1.5 hours. This data was developed using the same antibody clone with 87881-1-PBS in a different storage buffer formulation.



Biolayer interferometry (BLI) kinetic assays of 87881-1-RR against Human WNT1 were performed. The affinity constant is 4.38 nM.