

For Research Use Only

SORLA Recombinant monoclonal antibody

Catalog Number:87882-1-RR



Basic Information

Catalog Number: 87882-1-RR	GenBank Accession Number: NM_003105.6	Purification Method: Protein A purification
Size: 100ul , Concentration: 1000 µg/ml by Nanodrop;	GeneID (NCBI): 6653	CloneNo.: 253502E4
Source: Rabbit	UNIPROT ID: Q92673	Recommended Dilutions: WB: 1:2000-1:10000 IF-P: 1:200-1:800
Isotype: IgG	Full Name: sortilin-related receptor, L(DLR class) A repeats-containing	
Immunogen Catalog Number: EG5593	Calculated MW: 248 kDa	
	Observed MW: 300-310 kDa	

Applications

Tested Applications: WB, IF-P, ELISA	Positive Controls:
Species Specificity: human, mouse, rat	WB : mouse brain tissue, rat brain tissue IF-P : mouse brain tissue,

Background Information

SorLA also known as SorL1 or LR11, is a multiligand receptor belonging to the LDL receptor superfamily. It is also a member of vacuolar protein sorting-10 (Vps10) family and is enriched in the brain. SorLA acts as a sorting receptor for APP and prevents amyloidogenic processing of APP. Downregulation of SorLA has been found in patients with sporadic Alzheimer disease (AD). Currently SorLA has emerged as a potential target for AD therapy. (25404298)

Storage

Storage:
Store at -20°C. Stable for one year after shipment.
Storage Buffer:
PBS with 0.02% sodium azide and 50% glycerol, pH7.3
Aliquoting is unnecessary for -20°C storage

*** 20ul sizes contain 0.1% BSA

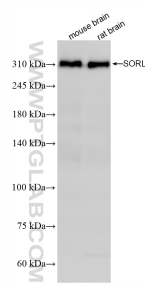
For technical support and original validation data for this product please contact:

T: 1 (888) 4PTGLAB (1-888-478-4522) (toll free in USA), or 1(312) 455-8498 (outside USA)

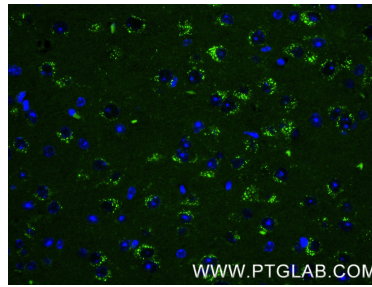
E: proteintech@ptglab.com
W: ptglab.com

This product is exclusively available under Proteintech Group brand and is not available to purchase from any other manufacturer.

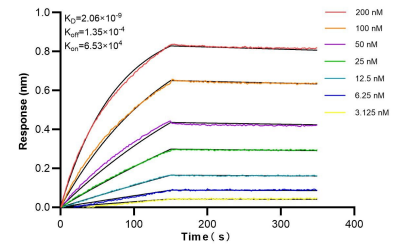
Selected Validation Data



Various lysates were subjected to SDS PAGE followed by western blot with 87882-1-RR (SORL antibody) at dilution of 1:5000 incubated at room temperature for 1.5 hours.



Immunofluorescent analysis of (4% PFA) fixed paraffin-embedded mouse brain tissue using SORL1 antibody (87882-1-RR, Clone: 253502E4) at dilution of 1:400 and CoraLite® 488-Conjugated Goat Anti-Rabbit IgG(H+L) (SA00013-2). Heat mediated antigen retrieval with Tris-EDTA buffer (pH 9.0).



Bioluminescence resonance energy transfer (BRET) kinetic assays of 87882-1-RR against Human SORL1 were performed. The affinity constant is 2.06 nM.