

For Research Use Only

CWC15 Recombinant monoclonal antibody, PBS Only (Capture)

Catalog Number: 87890-1-PBS



Basic Information

Catalog Number: 87890-1-PBS	GenBank Accession Number: BC040946	Purification Method: Protein A purification
Size: 100ug, Concentration: 1 mg/ml by Nanodrop;	GeneID (NCBI): 51503	CloneNo.: 260028B2
Source: Rabbit	UNIPROT ID: Q9P013	
Isotype: IgG	Full Name: CWC15 spliceosome-associated protein homolog (S. cerevisiae)	
Immunogen Catalog Number: AG18116	Calculated MW: 229 aa, 27 kDa	
	Observed MW: 34 kDa	

Applications

Tested Applications:
WB, IF/ICC, Cytometric bead array, Indirect ELISA

Species Specificity:
human

Product Information

87890-1-PBS targets CWC15 as part of a matched antibody pair:

MP03260-1: 87890-1-PBS capture and 87890-2-PBS detection (validated in Cytometric bead array)

Unconjugated rabbit recombinant monoclonal antibody in PBS only (BSA and azide free) storage buffer at a concentration of 1 mg/mL, ready for conjugation. Created using Proteintech's proprietary in-house recombinant technology. Recombinant production enables unrivalled batch-to-batch consistency, easy scale-up, and future security of supply.

This conjugation ready format makes antibodies ideal for use in many applications including: ELISAs, multiplex assays requiring matched pairs, mass cytometry, and multiplex imaging applications. Antibody use should be optimized by the end user for each application and assay.

Background Information

CWC15, also named as C11orf5 or Spliceosome-associated protein CWC15 homolog, is a 229 amino acid protein, which belongs to the CWC15 family. CWC15 as a Component of the PRP19-CDC5L complex that forms an integral part of the spliceosome and is required for activating pre-mRNA splicing.

Storage

Storage:
Store at -80°C.

Storage Buffer:
PBS only, pH7.3

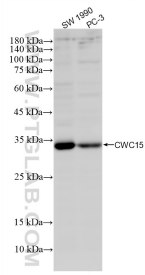
For technical support and original validation data for this product please contact:

T: 1 (888) 4PTGLAB (1-888-478-4522) (toll free in USA), or 1(312) 455-8498 (outside USA)

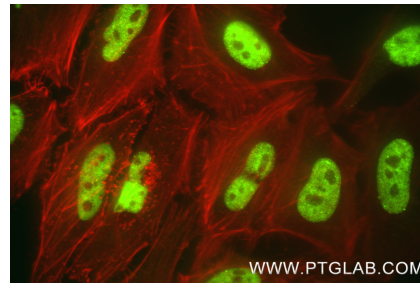
E: proteintech@ptglab.com
W: ptglab.com

This product is exclusively available under Proteintech Group brand and is not available to purchase from any other manufacturer.

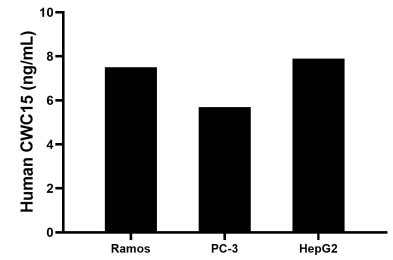
Selected Validation Data



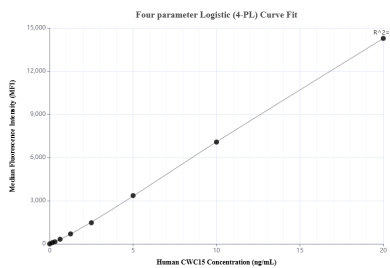
Various lysates were subjected to SDS PAGE followed by western blot with 87890-1-RR (CWC15 antibody) at dilution of 1:1000 incubated at room temperature for 1.5 hours. This data was developed using the same antibody clone with 87890-1-PBS in a different storage buffer formulation.



Immunofluorescent analysis of (4% PFA) fixed HeLa cells using CWC15 antibody (87890-1-RR, Clone: 260028B2) at dilution of 1:1000 and CoraLite® 488-Conjugated Goat Anti-Rabbit IgG(H+L) (SA00013-2). This data was developed using the same antibody clone with 87890-1-PBS in a different storage buffer formulation.



The mean CWC15 concentration was determined to be 7.5 ng/mL in Ramos cell extract based on a 1.2 mg/mL extract load, 5.7 ng/mL in PC-3 cell extract based on a 1.2 mg/mL extract load, 7.9 ng/mL in HepG2 cell extract based on a 1.2 mg/mL extract load.



Cytometric bead array standard curve of MP03260-1, CWC15 Recombinant Matched Antibody Pair, PBS Only. Capture antibody: 87890-1-PBS. Detection antibody: 87890-2-PBS. Standard: Ag18116. Range: 0.156-20 ng/mL