

For Research Use Only

FBP1 Recombinant monoclonal antibody, PBS Only (Capture)

Catalog Number:87898-4-PBS



Basic Information

| | | |
|---|--|---|
| Catalog Number: 87898-4-PBS | GenBank Accession Number: BC012927 | Purification Method: Protein A purification |
| Size: 100ug , Concentration: 1 mg/ml by Nanodrop; | GeneID (NCBI): 2203 | CloneNo.: 253535C8 |
| Source: Rabbit | UNIPROT ID: P09467 | |
| Isotype: IgG | Full Name: fructose-1,6-bisphosphatase 1 | |
| Immunogen Catalog Number: AG3837 | Calculated MW: 338 aa, 37 kDa | |

Applications

Tested Applications:
Cytometric bead array, Sandwich ELISA, Indirect ELISA

Species Specificity:
human

Product Information

87898-4-PBS targets FBP1 as part of a matched antibody pair:

MP03257-1: 87898-4-PBS capture and 87898-3-PBS detection (validated in Cytometric bead array)

MP03257-2: 87898-4-PBS capture and 87898-5-PBS detection (validated in Sandwich ELISA)

Unconjugated rabbit recombinant monoclonal antibody in PBS only (BSA and azide free) storage buffer at a concentration of 1 mg/mL, ready for conjugation. Created using Proteintech's proprietary in-house recombinant technology. Recombinant production enables unrivalled batch-to-batch consistency, easy scale-up, and future security of supply.

This conjugation ready format makes antibodies ideal for use in many applications including: ELISAs, multiplex assays requiring matched pairs, mass cytometry, and multiplex imaging applications. Antibody use should be optimized by the end user for each application and assay.

Storage

Storage:
Store at -80°C.
Storage Buffer:
PBS only, pH7.3

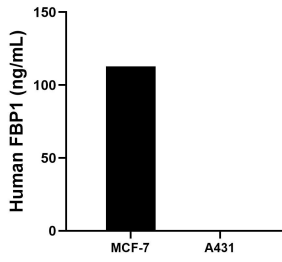
For technical support and original validation data for this product please contact:

T: 1 (888) 4PTGLAB (1-888-478-4522) (toll free in USA), or 1(312) 455-8498 (outside USA)

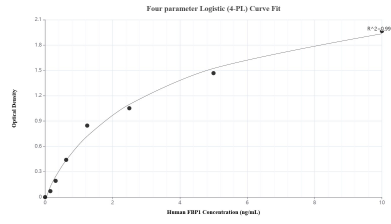
E: proteintech@ptglab.com
W: ptglab.com

This product is exclusively available under Proteintech Group brand and is not available to purchase from any other manufacturer.

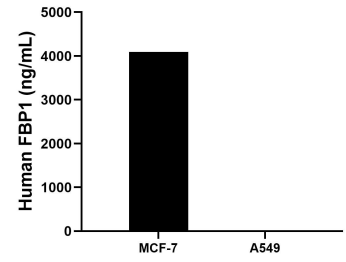
Selected Validation Data



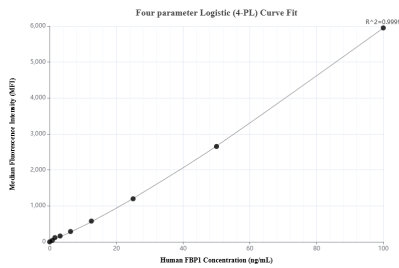
The mean FBP1 concentration was determined to be 112.85 ng/mL in MCF-7 cell extract based on a 1.50 mg/mL extract load and 0.58 ng/mL in A431 cell extract based on a 1.20 mg/mL extract load.



Sandwich ELISA standard curve of MP03257-2, Human FBP1 Recombinant Matched Antibody Pair - PBS only. 87898-4-PBS was coated to a plate as the capture antibody and incubated with serial dilutions of standard Ag3837. 87898-5-PBS was HRP conjugated as the detection antibody. Range: 0.156-10 ng/mL



The mean FBP1 concentration was determined to be 4096.2 ng/mL in MCF-7 cell extract based on a 1.2 mg/mL extract load, A549 cell extract were served as a negative control.



Cytometric bead array standard curve of MP03257-1, FBP1 Recombinant Matched Antibody Pair, PBS Only. Capture antibody: 87898-4-PBS. Detection antibody: 87898-3-PBS. Standard: Ag3837. Range: 0.781-100 ng/mL