

For Research Use Only

C21orf45 Recombinant monoclonal antibody, PBS Only (Detector)

Catalog Number: 87900-2-PBS



Basic Information

Catalog Number: 87900-2-PBS	GenBank Accession Number: BC042917	Purification Method: Protein A purification
Size: 100ug , Concentration: 1 mg/ml by Nanodrop;	GeneID (NCBI): 54069	CloneNo.: 260121A4
Source: Rabbit	UNIPROT ID: Q9NYP9	
Isotype: IgG	Full Name: chromosome 21 open reading frame 45	
Immunogen Catalog Number: AG22922	Calculated MW: 233 aa, 26 kDa	

Applications

Tested Applications:
Cytometric bead array, Sandwich ELISA, Indirect ELISA

Species Specificity:
human

Product Information

87900-2-PBS targets C21orf45 as part of a matched antibody pair:

MP03248-1: 87900-3-PBS capture and 87900-2-PBS detection (validated in Cytometric bead array)

MP03248-2: 87900-5-PBS capture and 87900-2-PBS detection (validated in Sandwich ELISA)

Unconjugated rabbit recombinant monoclonal antibody in PBS only (BSA and azide free) storage buffer at a concentration of 1 mg/mL, ready for conjugation. Created using Proteintech's proprietary in-house recombinant technology. Recombinant production enables unrivalled batch-to-batch consistency, easy scale-up, and future security of supply.

This conjugation ready format makes antibodies ideal for use in many applications including: ELISAs, multiplex assays requiring matched pairs, mass cytometry, and multiplex imaging applications. Antibody use should be optimized by the end user for each application and assay.

Storage

Storage:
Store at -80°C.
Storage Buffer:
PBS only, pH7.3

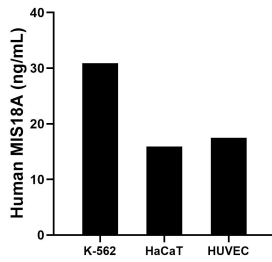
For technical support and original validation data for this product please contact:

T: 1 (888) 4PTGLAB (1-888-478-4522) (toll free in USA), or 1(312) 455-8498 (outside USA)

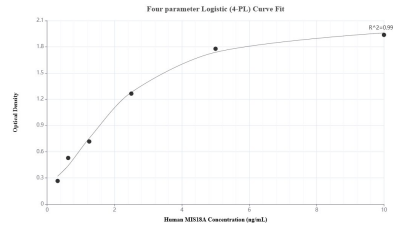
E: proteintech@ptglab.com
W: ptglab.com

This product is exclusively available under Proteintech Group brand and is not available to purchase from any other manufacturer.

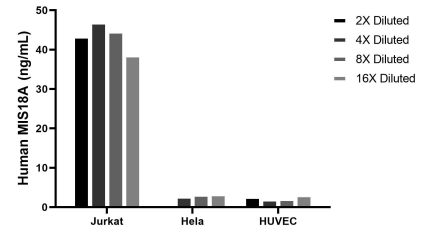
Selected Validation Data



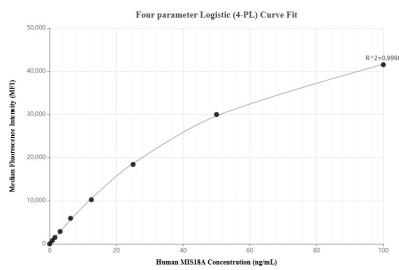
The mean MIS18A concentration was determined to be 30.86 ng/mL in K-562 cell extract based on a 1.2 mg/mL extract load, 15.92 ng/mL in HaCaT cell extract based on a 1.4 mg/mL extract load and 17.54 ng/mL in HUVEC cell extract based on a 1.5 mg/mL extract load.



Sandwich ELISA standard curve of MP03248-2, Human MIS18A Recombinant Matched Antibody Pair - PBS only. 87900-5-PBS was coated to a plate as the capture antibody and incubated with serial dilutions of standard Ag22922. 87900-2-PBS was HRP conjugated as the detection antibody. Range: 0.156-10 ng/mL



The mean MIS18A concentration was determined to be 43.3 ng/mL in Jurkat cell extract based on a 1.2 mg/mL extract load, 3.1 ng/mL in HeLa cell extract based on a 1.2 mg/mL extract load, 2.5 ng/mL in HUVEC cell extract based on a 1.2 mg/mL extract load.



Cytometric bead array standard curve of MP03248-1, MIS18A Recombinant Matched Antibody Pair, PBS Only. Capture antibody: 87900-3-PBS. Detection antibody: 87900-2-PBS. Standard: Ag22922. Range: 0.781-100 ng/mL