

For Research Use Only

Gephyrin/GPHN Recombinant monoclonal antibody

Catalog Number:87903-2-RR



Basic Information

Catalog Number: 87903-2-RR	GenBank Accession Number: BC030016	Purification Method: Protein A purification
Size: 100ul , Concentration: 1000 µg/ml by Nanodrop;	GeneID (NCBI): 10243	CloneNo.: 260132F4
Source: Rabbit	UNIPROT ID: Q9NQX3	Recommended Dilutions: WB: 1:5000-1:50000
Isotype: IgG	Full Name: gephyrin	
Immunogen Catalog Number: AG3370	Calculated MW: 769 aa, 83 kDa	
	Observed MW: 93 kDa	

Applications

Tested Applications: WB, ELISA	Positive Controls: WB : Jurkat cells, HeLa cells, A549 cells, LNCaP cells, HEK-293 cells
Species Specificity: human	

Background Information

Gephyrin (GPHN) is an organizational protein that clusters and localizes the inhibitory glycine receptor (GlyR) and GABAA receptors to the microtubular matrix of the neuronal postsynaptic membrane. Mice deficient in gephyrin develop a hereditary molybdenum cofactor deficiency and a neurological phenotype that mimics startle disease (hyperekplexia). In non-neuronal tissues, the encoded protein is also required for molybdenum cofactor biosynthesis. Two isoforms produced by alternative splicing have been described. The observed MW of Gephyrin is 93 kDa, larger than the predicted of 83 kDa, which may be due to the modifications on various phosphorylation sites.

Storage

Storage:
Store at -20°C. Stable for one year after shipment.
Storage Buffer:
PBS with 0.02% sodium azide and 50% glycerol, pH7.3
Aliquoting is unnecessary for -20°C storage

*** 20ul sizes contain 0.1% BSA

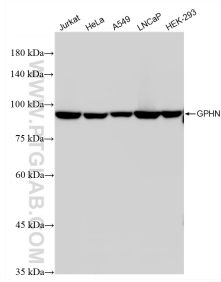
For technical support and original validation data for this product please contact:

T: 1 (888) 4PTGLAB (1-888-478-4522) (toll free in USA), or 1(312) 455-8498 (outside USA)

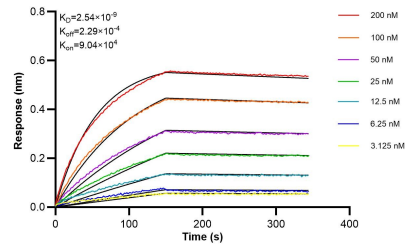
E: proteintech@ptglab.com
W: ptglab.com

This product is exclusively available under Proteintech Group brand and is not available to purchase from any other manufacturer.

Selected Validation Data



Various lysates were subjected to SDS PAGE followed by western blot with 87903-2-RR (GPHN antibody) at dilution of 1:10000 incubated at room temperature for 1.5 hours.



Biolayer interferometry (BLI) kinetic assays of 87903-2-RR against Human Gephyrin/GPHN were performed. The affinity constant is 2.54 nM.