

For Research Use Only

Mouse CD298/ATP1B3 Recombinant monoclonal antibody, PBS Only (Detector)

Catalog Number: 87906-3-PBS



Basic Information

| | | |
|---|---|---|
| Catalog Number: 87906-3-PBS | GenBank Accession Number: NM_007502.6 | Purification Method: Protein A purification |
| Size: 100ug , Concentration: 1 mg/ml by Nanodrop; | GeneID (NCBI): 11933 | CloneNo.: 260040D7 |
| Source: Rabbit | UNIPROT ID: P97370 | |
| Isotype: IgG | Full Name: ATPase, Na ⁺ /K ⁺ transporting, beta 3 polypeptide | |
| Immunogen Catalog Number: EG8917 | Calculated MW: 32 kDa | |

Applications

Tested Applications:
Cytometric bead array, Indirect ELISA

Species Specificity:
mouse

Product Information

87906-3-PBS targets CD298/ATP1B3 as part of a matched antibody pair:

MP03255-1: 87906-4-PBS capture and 87906-3-PBS detection (validated in Cytometric bead array)

Unconjugated rabbit recombinant monoclonal antibody in PBS only (BSA and azide free) storage buffer at a concentration of 1 mg/mL, ready for conjugation. Created using Proteintech's proprietary in-house recombinant technology. Recombinant production enables unrivalled batch-to-batch consistency, easy scale-up, and future security of supply.

This conjugation ready format makes antibodies ideal for use in many applications including: ELISAs, multiplex assays requiring matched pairs, mass cytometry, and multiplex imaging applications. Antibody use should be optimized by the end user for each application and assay.

Storage

Storage:
Store at -80°C.

Storage Buffer:
PBS only, pH7.3

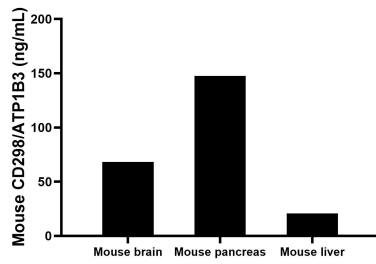
For technical support and original validation data for this product please contact:

T: 1 (888) 4PTGLAB (1-888-478-4522) (toll free in USA), or 1(312) 455-8498 (outside USA)

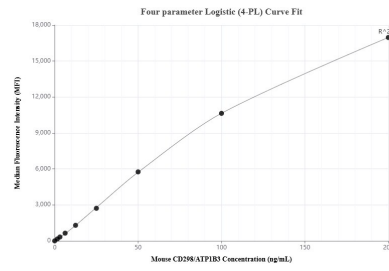
E: proteintech@ptglab.com
W: ptglab.com

This product is exclusively available under Proteintech Group brand and is not available to purchase from any other manufacturer.

Selected Validation Data



The mean CD298/ATP1B3 concentration was determined to be 68.3 ng/mL in mouse brain tissue extract based on a 1.0 mg/mL extract load, 147.6 ng/mL in mouse pancreas tissue extract based on a 1.0 mg/mL extract load, 20.8 ng/mL in mouse liver tissue extract based on a 1.0 mg/mL extract load.



Cytometric bead array standard curve of MP03255-1, MOUSE CD298/ATP1B3 Recombinant Matched Antibody Pair, PBS Only. Capture antibody: 87906-4-PBS. Detection antibody: 87906-3-PBS. Standard: Eg8917. Range: 1.562-200 ng/mL.