

For Research Use Only

MIEN1 Recombinant monoclonal antibody

Catalog Number: 87911-1-RR



Basic Information

Catalog Number: 87911-1-RR	GenBank Accession Number: NM_032339.5	Purification Method: Protein A purification
Size: 100ul , Concentration: 1000 µg/ml by Nanodrop;	GeneID (NCBI): 84299	CloneNo.: 252392C9
Source: Rabbit	UNIPROT ID: Q9BRT3	Recommended Dilutions: WB: 1:1000-1:4000
Isotype: IgG	Full Name: chromosome 17 open reading frame 37	
Immunogen Catalog Number: EG5748	Calculated MW: 12 kDa	
	Observed MW: 12 kDa	

Applications

Tested Applications: WB, ELISA	Positive Controls: WB : T-47D cells, BT-474 cells, MDA-MB-231 cells, DU 145 cells
Species Specificity: human	

Background Information

MIEN1 (Migration and Invasion Enhancer 1), also known as C17orf37 or RDEP, is a protein-coding gene located in the q12 region of chromosome 17. Through prenylation modification, this protein anchors to the inner side of the cell membrane, promotes actin cytoskeleton rearrangement and membrane ruffling, thereby enhancing the migration and invasion capabilities of tumor cells. MIEN1 is highly expressed in various malignant tumors, including breast cancer, prostate cancer, and lung cancer, and its expression level is closely correlated with tumor metastasis, clinical stage, and poor patient prognosis. Moreover, MIEN1 promotes epithelial-mesenchymal transition (EMT) by regulating signaling pathways such as PI3K/AKT and NF-κB, making it a potential anti-metastatic therapeutic target and prognostic marker.

Storage

Storage:
Store at -20°C. Stable for one year after shipment.
Storage Buffer:
PBS with 0.02% sodium azide and 50% glycerol, pH7.3
Aliquoting is unnecessary for -20°C storage

*** 20ul sizes contain 0.1% BSA

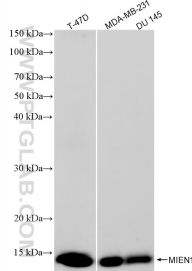
For technical support and original validation data for this product please contact:
T: 1 (888) 4PTGLAB (1-888-478-4522) (toll free in USA), or 1(312) 455-8498 (outside USA) E: proteintech@ptglab.com
W: ptglab.com

This product is exclusively available under Proteintech Group brand and is not available to purchase from any other manufacturer.

Selected Validation Data



BT-474 cells were subjected to SDS PAGE followed by western blot with 87911-1-RR (MIEN1 antibody) at dilution of 1:2000 incubated at room temperature for 1.5 hours.



Various lysates were subjected to SDS PAGE followed by western blot with 87911-1-RR (MIEN1 antibody) at dilution of 1:2000 incubated at room temperature for 1.5 hours.