

For Research Use Only

CRLF2 Recombinant monoclonal antibody

Catalog Number: 87914-4-RR



Basic Information

Catalog Number: 87914-4-RR	GenBank Accession Number: /	Purification Method: Protein A purification
Size: 100ul , Concentration: 1000 µg/ml by Nanodrop;	GeneID (NCBI): 57914	CloneNo.: 252992G8
Source: Rabbit	UNIPROT ID: Q8C1I9-1	Recommended Dilutions: WB: 1:500-1:2000
Isotype: IgG	Full Name: cytokine receptor-like factor 2	
Immunogen Catalog Number: EG7520	Calculated MW: 38 kDa	
	Observed MW: 38-45 kDa	

Applications

Tested Applications: WB, ELISA	Positive Controls: WB : A20 cells, mouse lung tissue, mouse testis tissue
Species Specificity: mouse	

Background Information

Cytokine receptor-like factor 2 (CRLF2), also known as the thymic stromal derived lymphopoietin receptor (TSLPR), which in combination with the interleukin 7 receptor alpha chain (IL-7R) forms the receptor for thymic stromal lymphopoietin. CRLF2 is a type I cytokine receptor. CRLF2 rearrangements occur either as a translocation to the immunoglobulin heavy-chain enhancer region (IGH-CRLF2) or by a deletion of upstream PAR1 that leads to joining of CRLF2 to adjacent P2RY8. CRLF2 is expressed in heart, skeletal muscle, kidney and liver and is primarily expressed in dendrites and monocytes. The protein has phosphorylation modification and glycosylation modification.

Storage

Storage:
Store at -20°C. Stable for one year after shipment.
Storage Buffer:
PBS with 0.02% sodium azide and 50% glycerol, pH7.3
Aliquoting is unnecessary for -20°C storage

*** 20ul sizes contain 0.1% BSA

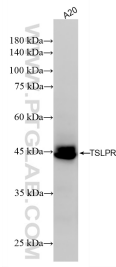
For technical support and original validation data for this product please contact:

T: 1 (888) 4PTGLAB (1-888-478-4522) (toll free in USA), or 1(312) 455-8498 (outside USA)

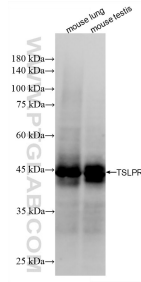
E: proteintech@ptglab.com
W: ptglab.com

This product is exclusively available under Proteintech Group brand and is not available to purchase from any other manufacturer.

Selected Validation Data



A20 cells were subjected to SDS PAGE followed by western blot with 87914-4-RR (TSLPR antibody) at dilution of 1:1000 incubated at room temperature for 1.5 hours.



Various lysates were subjected to SDS PAGE followed by western blot with 87914-4-RR (TSLPR antibody) at dilution of 1:1000 incubated at room temperature for 1.5 hours.