

For Research Use Only

PPP1R2 Recombinant monoclonal antibody, PBS Only (Capture)

Catalog Number: 87916-1-PBS



Basic Information

Catalog Number: 87916-1-PBS	GenBank Accession Number: BC007655	Purification Method: Protein A purification
Size: 100ug , Concentration: 1 mg/ml by Nanodrop;	GeneID (NCBI): 5504	CloneNo.: 253579H6
Source: Rabbit	UNIPROT ID: P41236	
Isotype: IgG	Full Name: protein phosphatase 1, regulatory (inhibitor) subunit 2	
Immunogen Catalog Number: AG0805	Calculated MW: 23 kDa	
	Observed MW: 30 kDa	

Applications

Tested Applications:
WB, Cytometric bead array, Indirect ELISA

Species Specificity:
human

Product Information

87916-1-PBS targets PPP1R2 as part of a matched antibody pair:

MP03258-1: 87916-1-PBS capture and 87916-2-PBS detection (validated in Cytometric bead array)

Unconjugated rabbit recombinant monoclonal antibody in PBS only (BSA and azide free) storage buffer at a concentration of 1 mg/mL, ready for conjugation. Created using Proteintech's proprietary in-house recombinant technology. Recombinant production enables unrivalled batch-to-batch consistency, easy scale-up, and future security of supply.

This conjugation ready format makes antibodies ideal for use in many applications including: ELISAs, multiplex assays requiring matched pairs, mass cytometry, and multiplex imaging applications. Antibody use should be optimized by the end user for each application and assay.

Background Information

PPP1R2 (PHOSPHATASE INHIBITOR 2) forms heterodimer with phosphatase type-1 (PP1). Activity of the complex can be regulated by a series of phosphorylations/ dephosphorylations events on PPP1R2, functioning in some important process in vivo.

Storage

Storage:
Store at -80°C.

Storage Buffer:
PBS only, pH7.3

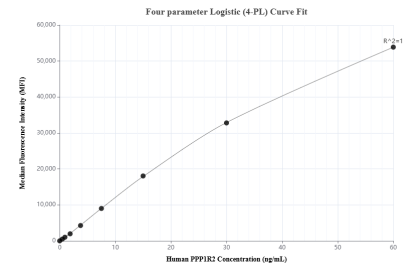
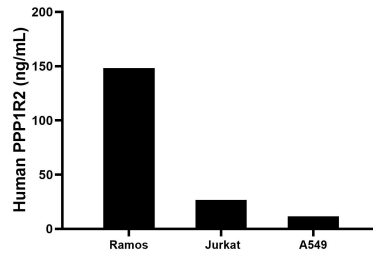
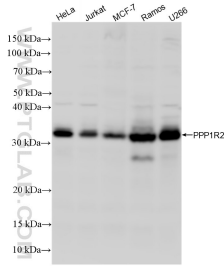
For technical support and original validation data for this product please contact:

T: 1 (888) 4PTGLAB (1-888-478-4522) (toll free in USA), or 1(312) 455-8498 (outside USA)

E: proteintech@ptglab.com
W: ptglab.com

This product is exclusively available under Proteintech Group brand and is not available to purchase from any other manufacturer.

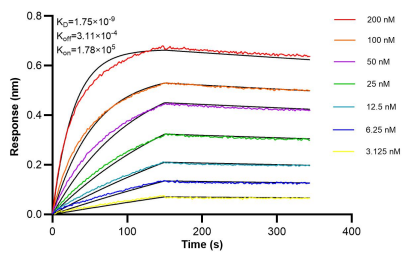
Selected Validation Data



Various lysates were subjected to SDS PAGE followed by western blot with 87916-1-RR (PPP1R2 antibody) at dilution of 1:1000 incubated at room temperature for 1.5 hours. This data was developed using the same antibody clone with 87916-1-PBS in a different storage buffer formulation.

The mean PPP1R2 concentration was determined to be 148.2 ng/mL in Ramos cell extract based on a 1.5 mg/mL extract load, 26.8 ng/mL in Jurkat cell extract based on a 1.2 mg/mL extract load, 11.6 ng/mL in A549 cell extract based on a 1.2 mg/mL extract load.

Cytometric bead array standard curve of MP03258-1, PPP1R2 Recombinant Matched Antibody Pair, PBS Only. Capture antibody: 87916-1-PBS. Detection antibody: 87916-2-PBS. Standard: Ag0805. Range: 0.469-60 ng/mL.



Biolayer interferometry (BLI) kinetic assays of 87916-1-RR against Human PPP1R2 were performed. The affinity constant is 1.75 nM.