

For Research Use Only

# Mouse SEZ6L Recombinant monoclonal antibody, PBS Only

Catalog Number: 87923-1-PBS



## Basic Information

<b>Catalog Number:</b> 87923-1-PBS	<b>GenBank Accession Number:</b> NM_001253916.2	<b>Purification Method:</b> Protein A purification
<b>Size:</b> 100ug , Concentration: 1 mg/ml by Nanodrop;	<b>GeneID (NCBI):</b> 56747	<b>CloneNo.:</b> 260140D4
<b>Source:</b> Rabbit	<b>UNIPROT ID:</b> Q6P1D5-1	
<b>Isotype:</b> IgG	<b>Full Name:</b> seizure related 6 homolog like	
<b>Immunogen Catalog Number:</b> EG9193	<b>Calculated MW:</b> 105 kDa	
	<b>Observed MW:</b> 150-200 kDa	

## Applications

**Tested Applications:**  
WB, IF-P, Indirect ELISA

**Species Specificity:**  
mouse, rat

## Background Information

The BSRPs (brain-specific receptor-like proteins) were predominantly expressed in the soma and dendrites of neurons and localized in the endoplasmic reticulum (ER). Seizure 6-like protein (SEZ6L, also known as BSRP-B) is a member of the BSRP family. It is a candidate tumor suppressor gene and may contribute to specialized endoplasmic reticulum functions in neurons (PMID: 16814779). The observed molecular weight of SEZ6L is higher than its calculated one, because of N-glycosylation (PMID: 27716410).

## Storage

**Storage:**  
Store at -80°C.

**Storage Buffer:**  
PBS only, pH7.3

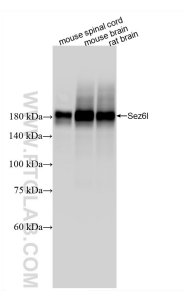
For technical support and original validation data for this product please contact:

T: 1 (888) 4PTGLAB (1-888-478-4522) (toll free in USA), or 1(312) 455-8498 (outside USA)

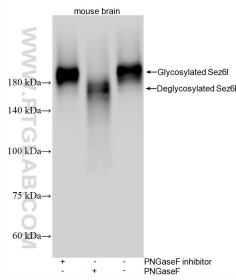
E: [proteintech@ptglab.com](mailto:proteintech@ptglab.com)  
W: [ptglab.com](http://ptglab.com)

**This product is exclusively available under Proteintech Group brand and is not available to purchase from any other manufacturer.**

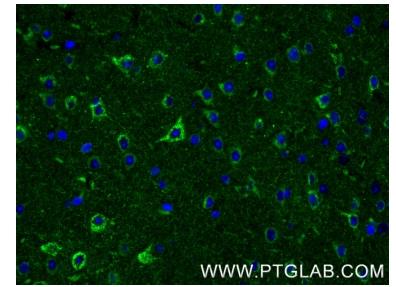
## Selected Validation Data



Various lysates were subjected to SDS PAGE followed by western blot with 87923-1-RR (Sez6l antibody) at dilution of 1:20000 incubated at room temperature for 1.5 hours. This data was developed using the same antibody clone with 87923-1-PBS in a different storage buffer formulation.



Various lysates were subjected to SDS PAGE followed by western blot with 87923-1-RR (SEZ6L antibody) at dilution of 1:40000 incubated at room temperature for 1.5 hours. This data was developed using the same antibody clone with 87923-1-PBS in a different storage buffer formulation.



Immunofluorescent analysis of (4% PFA) fixed paraffin-embedded mouse brain tissue using SEZ6L antibody (87923-1-RR, Clone: 260140D4) at dilution of 1:1000 and CoraLite®488-Conjugated Goat Anti-Rabbit IgG(H+L) (SA00013-2). Heat mediated antigen retrieval with Tris-EDTA buffer (pH 9.0). This data was developed using the same antibody clone with 87923-1-PBS in a different storage buffer formulation.