

For Research Use Only

SEZ6L Recombinant monoclonal antibody

Catalog Number: 87923-1-RR



Basic Information

Catalog Number: 87923-1-RR	GenBank Accession Number: NM_001253916.2	Purification Method: Protein A purification
Size: 100ul , Concentration: 1000 µg/ml by Nanodrop;	GeneID (NCBI): 56747	CloneNo.: 260140D4
Source: Rabbit	UNIPROT ID: Q6P1D5-1	Recommended Dilutions: WB: 1:5000-1:50000 IF-P: 1:500-1:2000
Isotype: IgG	Full Name: seizure related 6 homolog like	
Immunogen Catalog Number: EG9193	Calculated MW: 105 kDa	
	Observed MW: 150-200 kDa	

Applications

Tested Applications: WB, IF-P, ELISA	Positive Controls:
Species Specificity: mouse, rat	WB : mouse brain tissue, rat brain tissue, mouse spinal cord tissue
	IF-P : mouse brain tissue,

Background Information

The BSRPs (brain-specific receptor-like proteins) were predominantly expressed in the soma and dendrites of neurons and localized in the endoplasmic reticulum (ER). Seizure 6-like protein (SEZ6L, also known as BSRP-B) is a member of the BSRP family. It is a candidate tumor suppressor gene and may contribute to specialized endoplasmic reticulum functions in neurons (PMID: 16814779). The observed molecular weight of SEZ6L is higher than its calculated one, because of N-glycosylation (PMID: 27716410).

Storage

Storage:
Store at -20°C. Stable for one year after shipment.
Storage Buffer:
PBS with 0.02% sodium azide and 50% glycerol, pH7.3
Aliquoting is unnecessary for -20°C storage

*** 20ul sizes contain 0.1% BSA

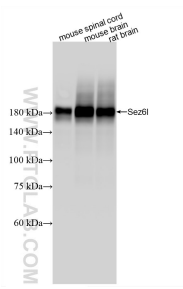
For technical support and original validation data for this product please contact:

T: 1 (888) 4PTGLAB (1-888-478-4522) (toll free in USA), or 1(312) 455-8498 (outside USA)

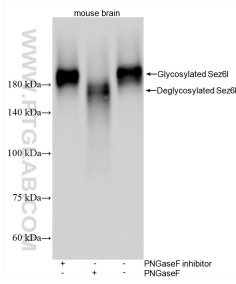
E: proteintech@ptglab.com
W: ptglab.com

This product is exclusively available under Proteintech Group brand and is not available to purchase from any other manufacturer.

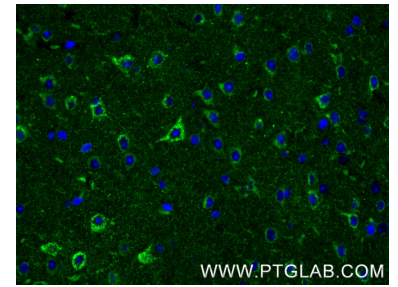
Selected Validation Data



Various lysates were subjected to SDS PAGE followed by western blot with 87923-1-RR (Sez6l antibody) at dilution of 1:20000 incubated at room temperature for 1.5 hours.



Various lysates were subjected to SDS PAGE followed by western blot with 87923-1-RR (SEZ6L antibody) at dilution of 1:40000 incubated at room temperature for 1.5 hours.



Immunofluorescent analysis of (4% PFA) fixed paraffin-embedded mouse brain tissue using SEZ6L antibody (87923-1-RR, Clone: 260140D4) at dilution of 1:1000 and CoraLite®488-Conjugated Goat Anti-Rabbit IgG(H+L) (SA00013-2). Heat mediated antigen retrieval with Tris-EDTA buffer (pH 9.0).