

For Research Use Only

# SEC62 Recombinant monoclonal antibody

Catalog Number:87925-1-RR



## Basic Information

<b>Catalog Number:</b> 87925-1-RR	<b>GenBank Accession Number:</b> NM_003262	<b>Purification Method:</b> Protein A purification
<b>Size:</b> 100ul , Concentration: 1000 µg/ml by Nanodrop;	<b>GeneID (NCBI):</b> 7095	<b>CloneNo.:</b> 253590D1
<b>Source:</b> Rabbit	<b>UNIPROT ID:</b> Q99442	<b>Recommended Dilutions:</b> WB: 1:5000-1:50000 IF/ICC: 1:200-1:800
<b>Isotype:</b> IgG	<b>Full Name:</b> SEC62 homolog (S. cerevisiae)	
<b>Immunogen Catalog Number:</b> AG29932	<b>Calculated MW:</b> 46 kDa	
	<b>Observed MW:</b> 52 kDa	

## Applications

**Tested Applications:**  
WB, IF/ICC, ELISA

**Species Specificity:**  
human, mouse, rat

**Positive Controls:**

**WB :** LoVo cells, SW480 cells, SKOV-3 cells, SK-BR-3 cells, NIH/3T3 cells, C6 cells

**IF/ICC :** HeLa cells,

## Background Information

SEC62 is an integral endoplasmic reticulum (ER) membrane protein. SEC62 and SEC63 form a dimeric complex and play a central role in the translocation of nascent and newly synthesized precursor polypeptides into the ER. SEC62 is associated with poor prognosis in a variety of tumors, such as prostate cancer, hepatocellular cancer, breast cancer, melanoma, and colorectal cancer (PMID: 36262254).

## Storage

**Storage:**

Store at -20°C. Stable for one year after shipment.

**Storage Buffer:**

PBS with 0.02% sodium azide and 50% glycerol, pH7.3

Aliquoting is unnecessary for -20°C storage

**\*\*\* 20ul sizes contain 0.1% BSA**

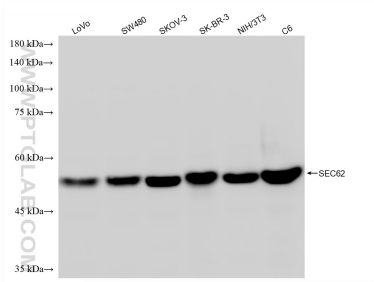
For technical support and original validation data for this product please contact:

T: 1 (888) 4PTGLAB (1-888-478-4522) (toll free in USA), or 1(312) 455-8498 (outside USA)

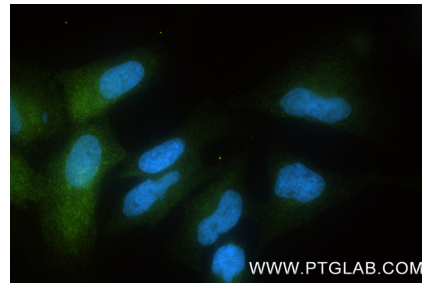
E: [proteintech@ptglab.com](mailto:proteintech@ptglab.com)  
W: [ptglab.com](http://ptglab.com)

**This product is exclusively available under Proteintech Group brand and is not available to purchase from any other manufacturer.**

## Selected Validation Data



Various lysates were subjected to SDS PAGE followed by western blot with 87925-1-RR (SEC62 antibody) at dilution of 1:10000 incubated at room temperature for 1.5 hours.



Immunofluorescent analysis of (4% PFA) fixed HeLa cells using SEC62 antibody (87925-1-RR, Clone: 253590D1) at dilution of 1:400 and CoraLite® 488-Conjugated Goat Anti-Rabbit IgG(H+L) (SA00013-2).