

For Research Use Only

# KK-LC-1 Recombinant monoclonal antibody, PBS Only

Catalog Number: 87944-1-PBS



## Basic Information

<b>Catalog Number:</b> 87944-1-PBS	<b>GenBank Accession Number:</b> NM_001017978.3	<b>Purification Method:</b> Protein A purification
<b>Size:</b> 100ug , Concentration: 1 mg/ml by Nanodrop;	<b>GeneID (NCBI):</b> 203413	<b>CloneNo.:</b> 260139A2
<b>Source:</b> Rabbit	<b>UNIPROT ID:</b> Q5H943	
<b>Isotype:</b> IgG	<b>Full Name:</b> chromosome X open reading frame 61	
<b>Immunogen Catalog Number:</b> EG5757	<b>Calculated MW:</b> 13 kDa	
	<b>Observed MW:</b> 13-16 kDa	

## Applications

**Tested Applications:**  
WB, Indirect ELISA

**Species Specificity:**  
human

## Background Information

KK-LC-1 has been described as kita-kyushu lung cancer antigen 1, cancer/testis antigen 83. Therefore, KK-LC-1 is also known as CXorf61 and CT83. KK-LC-1 has been tested for association to diseases, such as adenocarcinoma and lung neoplasms. Studies have shown that KK-LC-1 is an ideal target for immunotherapy of triple-negative breast cancer (TNBC) (PMID: 26327325).

## Storage

**Storage:**  
Store at -80°C.

**Storage Buffer:**  
PBS only, pH7.3

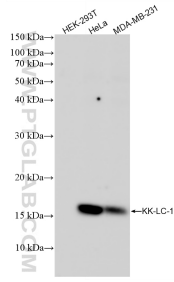
For technical support and original validation data for this product please contact:

T: 1 (888) 4PTGLAB (1-888-478-4522) (toll free in USA), or 1(312) 455-8498 (outside USA)

E: [proteintech@ptglab.com](mailto:proteintech@ptglab.com)  
W: [ptglab.com](http://ptglab.com)

**This product is exclusively available under Proteintech Group brand and is not available to purchase from any other manufacturer.**

## Selected Validation Data



Various lysates were subjected to SDS PAGE followed by western blot with 87944-1-RR (KK-LC-1 antibody) at dilution of 1:5000 incubated at room temperature for 1.5 hours. KK-LC-1 deficient cell line HEK-293T was served as a negative control. This data was developed using the same antibody clone with 87944-1-PBS in a different storage buffer formulation.