

For Research Use Only

KK-LC-1 Recombinant monoclonal antibody

Catalog Number: 87944-1-RR



Basic Information

Catalog Number: 87944-1-RR	GenBank Accession Number: NM_001017978.3	Purification Method: Protein A purification
Size: 100ul , Concentration: 1000 µg/ml by Nanodrop;	GeneID (NCBI): 203413	CloneNo.: 260139A2
Source: Rabbit	UNIPROT ID: Q5H943	Recommended Dilutions: WB: 1:2000-1:10000
Isotype: IgG	Full Name: chromosome X open reading frame 61	
Immunogen Catalog Number: EG5757	Calculated MW: 13 kDa	
	Observed MW: 13-16 kDa	

Applications

Tested Applications: WB, ELISA	Positive Controls: WB : HeLa cells, SGC-7901 cells, MDA-MB-231 cells, U2OS cells, U266 cells
Species Specificity: human	

Background Information

KK-LC-1 has been described as kita-kyushu lung cancer antigen 1, cancer/testis antigen 83. Therefore, KK-LC-1 is also known as CXorf61 and CT83. KK-LC-1 has been tested for association to diseases, such as adenocarcinoma and lung neoplasms. Studies have shown that KK-LC-1 is an ideal target for immunotherapy of triple-negative breast cancer (TNBC) (PMID: 26327325).

Storage

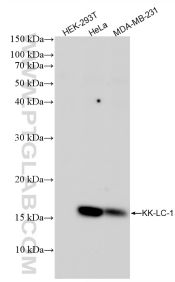
Storage:
Store at -20°C. Stable for one year after shipment.
Storage Buffer:
PBS with 0.02% sodium azide and 50% glycerol, pH7.3
Aliquoting is unnecessary for -20°C storage

*** 20ul sizes contain 0.1% BSA

For technical support and original validation data for this product please contact:
T: 1 (888) 4PTGLAB (1-888-478-4522) (toll free in USA), or 1(312) 455-8498 (outside USA) E: proteintech@ptglab.com
W: ptglab.com

This product is exclusively available under Proteintech Group brand and is not available to purchase from any other manufacturer.

Selected Validation Data



Various lysates were subjected to SDS PAGE followed by western blot with 87944-1-RR (KK-LC-1 antibody) at dilution of 1:5000 incubated at room temperature for 1.5 hours. KK-LC-1 deficient cell line HEK-293T was served as a negative control.