

For Research Use Only

CCDC88C Recombinant monoclonal antibody, PBS Only (Detector)

Catalog Number: 87946-2-PBS



Basic Information

Catalog Number: 87946-2-PBS	GenBank Accession Number: BC028565	Purification Method: Protein A purification
Size: 100ug, Concentration: 1 mg/ml by Nanodrop;	GeneID (NCBI): 440193	CloneNo.: 260135A11
Source: Rabbit	UNIPROT ID: Q9P219	
Isotype: IgG	Full Name: coiled-coil domain containing 88C	
Immunogen Catalog Number: AG22711	Calculated MW: 2028 aa, 228 kDa	

Applications

Tested Applications:
Cytometric bead array, Indirect ELISA

Species Specificity:
human

Product Information

87946-2-PBS targets CCDC88C as part of a matched antibody pair:

MP03275-1: 87946-3-PBS capture and 87946-2-PBS detection (validated in Cytometric bead array)

Unconjugated rabbit recombinant monoclonal antibody in PBS only (BSA and azide free) storage buffer at a concentration of 1 mg/mL, ready for conjugation. Created using Proteintech's proprietary in-house recombinant technology. Recombinant production enables unrivalled batch-to-batch consistency, easy scale-up, and future security of supply.

This conjugation ready format makes antibodies ideal for use in many applications including: ELISAs, multiplex assays requiring matched pairs, mass cytometry, and multiplex imaging applications. Antibody use should be optimized by the end user for each application and assay.

Storage

Storage:
Store at -80°C.

Storage Buffer:
PBS only, pH7.3

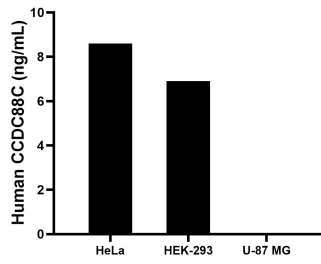
For technical support and original validation data for this product please contact:

T: 1 (888) 4PTGLAB (1-888-478-4522) (toll free in USA), or 1(312) 455-8498 (outside USA)

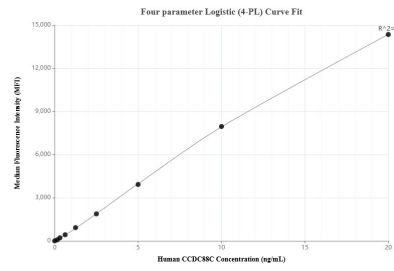
E: proteintech@ptglab.com
W: ptglab.com

This product is exclusively available under Proteintech Group brand and is not available to purchase from any other manufacturer.

Selected Validation Data



The mean CCDC88C concentration was determined to be 8.6 ng/mL in HeLa cell extract based on a 1.2 mg/mL extract load, 6.9 ng/mL in HEK-293 cell extract based on a 1.5 mg/mL extract load, U-87 MG cell extract were served as a negative control.



Cytometric bead array standard curve of MP03275-1, CCDC88C Recombinant Matched Antibody Pair, PBS Only. Capture antibody: 87946-3-PBS. Detection antibody: 87946-2-PBS. Standard: Ag22711. Range: 0.156-20 ng/mL.