

For Research Use Only

# Mouse Epha7 Recombinant monoclonal antibody, PBS Only

Catalog Number:87966-1-PBS



## Basic Information

<b>Catalog Number:</b> 87966-1-PBS	<b>GenBank Accession Number:</b> NM_010141.4	<b>Purification Method:</b> Protein A purification
<b>Size:</b> 100ug , Concentration: 1 mg/ml by Nanodrop;	<b>GeneID (NCBI):</b> 13841	<b>CloneNo.:</b> 253531B5
<b>Source:</b> Rabbit	<b>UNIPROT ID:</b> Q61772-1	
<b>Isotype:</b> IgG	<b>Full Name:</b> Eph receptor A7	
<b>Immunogen Catalog Number:</b> EG8773	<b>Calculated MW:</b> 112 kDa	
	<b>Observed MW:</b> 75 kDa, 120 kDa	

## Applications

**Tested Applications:**  
WB, Indirect ELISA

**Species Specificity:**  
mouse

## Background Information

EPH receptor A7 (EPHA7) is a member of the Eph receptor family of receptor tyrosine kinases (RTKs) that mediates contact-dependent cell-cell communication through binding to ephrin-A ligands. In mice, Epha7 is prominently expressed during embryonic development, particularly in the central nervous system, where it regulates axon guidance, neuronal connectivity, cortical patterning, and cell positioning. EPHA7 signaling can induce cell repulsion, boundary formation, and apoptosis, contributing to proper tissue organization. In addition to developmental roles, Epha7 is also detected in selected adult tissues, including brain and lymphoid compartments, although at lower levels. Functionally, EPHA7 has been implicated in neurodevelopmental processes, synaptic organization, and tissue morphogenesis. Emerging evidence suggests roles in tumor biology, where EPHA7 may act as a tumor suppressor or context-dependent regulator of cell proliferation and survival. Due to its involvement in developmental signaling and disease, EPHA7 is of interest in neuroscience, developmental biology, and cancer research.

## Storage

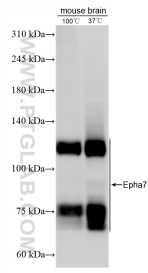
**Storage:**  
Store at -80°C.

**Storage Buffer:**  
PBS only, pH7.3

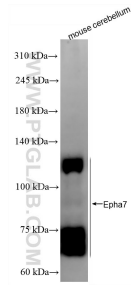
For technical support and original validation data for this product please contact:  
T: 1 (888) 4PTGLAB (1-888-478-4522) (toll free in USA), or 1(312) 455-8498 (outside USA)      E: [proteintech@ptglab.com](mailto:proteintech@ptglab.com)  
W: [ptglab.com](http://ptglab.com)

**This product is exclusively available under Proteintech Group brand and is not available to purchase from any other manufacturer.**

## Selected Validation Data



Various lysates were subjected to SDS PAGE followed by western blot with 87966-1-RR (Epha7 antibody) at dilution of 1:5000 incubated at room temperature for 1.5 hours. This data was developed using the same antibody clone with 87966-1-PBS in a different storage buffer formulation.



Various lysates were subjected to SDS PAGE followed by western blot with 87966-1-RR (Epha7 antibody) at dilution of 1:5000 incubated at room temperature for 1.5 hours. This data was developed using the same antibody clone with 87966-1-PBS in a different storage buffer formulation.