

For Research Use Only

Epha7 Recombinant monoclonal antibody

Catalog Number:87966-1-RR



Basic Information

Catalog Number: 87966-1-RR	GenBank Accession Number: NM_010141.4	Purification Method: Protein A purification
Size: 100ul , Concentration: 1000 µg/ml by Nanodrop;	GeneID (NCBI): 13841	CloneNo.: 253531B5
Source: Rabbit	UNIPROT ID: Q61772-1	Recommended Dilutions: WB: 1:2000-1:10000
Isotype: IgG	Full Name: Eph receptor A7	
Immunogen Catalog Number: EG8773	Calculated MW: 112 kDa	
	Observed MW: 75 kDa, 120 kDa	

Applications

Tested Applications: WB, ELISA	Positive Controls: WB : mouse brain tissue, mouse cerebellum tissue
Species Specificity: mouse	

Background Information

EPH receptor A7 (EPHA7) is a member of the Eph receptor family of receptor tyrosine kinases (RTKs) that mediates contact-dependent cell-cell communication through binding to ephrin-A ligands. In mice, Epha7 is prominently expressed during embryonic development, particularly in the central nervous system, where it regulates axon guidance, neuronal connectivity, cortical patterning, and cell positioning. EPHA7 signaling can induce cell repulsion, boundary formation, and apoptosis, contributing to proper tissue organization. In addition to developmental roles, Epha7 is also detected in selected adult tissues, including brain and lymphoid compartments, although at lower levels. Functionally, EPHA7 has been implicated in neurodevelopmental processes, synaptic organization, and tissue morphogenesis. Emerging evidence suggests roles in tumor biology, where EPHA7 may act as a tumor suppressor or context-dependent regulator of cell proliferation and survival. Due to its involvement in developmental signaling and disease, EPHA7 is of interest in neuroscience, developmental biology, and cancer research.

Storage

Storage:
Store at -20°C. Stable for one year after shipment.
Storage Buffer:
PBS with 0.02% sodium azide and 50% glycerol, pH7.3
Aliquoting is unnecessary for -20°C storage

*** 20ul sizes contain 0.1% BSA

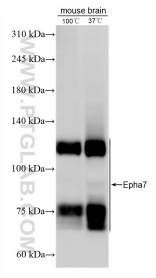
For technical support and original validation data for this product please contact:

T: 1 (888) 4PTGLAB (1-888-478-4522) (toll free in USA), or 1(312) 455-8498 (outside USA)

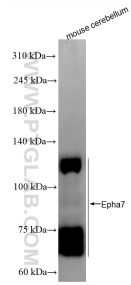
E: proteintech@ptglab.com
W: ptglab.com

This product is exclusively available under Proteintech Group brand and is not available to purchase from any other manufacturer.

Selected Validation Data



Various lysates were subjected to SDS PAGE followed by western blot with 87966-1-RR (Epha7 antibody) at dilution of 1:5000 incubated at room temperature for 1.5 hours.



Various lysates were subjected to SDS PAGE followed by western blot with 87966-1-RR (Epha7 antibody) at dilution of 1:5000 incubated at room temperature for 1.5 hours.